

# Fabrics & Finishings 2023

Oddajemy w Państwa ręce poszerzony wzornik tkanin. Odświeżona paleta oferty standardowej tworzy nowy nastrój kolorystyczny marki Profim, a pełne karty (producenckie) wybranych tkanin pozwalają na dobór idealnego dla mebla odcienia. Tworzenie harmonijnych wnętrz jest teraz jeszcze łatwiejsze.

We would like to present a book of our extended fabric collection. The refreshed palette of the standard offer creates a new colour concept for the Profim brand and full (fabric producer's) cards of selected fabrics enable the selection of an ideal shade to match the furniture. Creating harmonious interiors is now even easier.

Wir freuen uns unsere erweiterte Stoffkollektion vorstellen zu können. Das Standardangebot wurde überarbeitet und aufgefrischt und durch ausgewählte Stoffe (jeweils gesamte Farbkarte) der Hersteller erweitert. Dadurch lassen sich Räume noch individueller gestalten.

Grupa Cenowa / Price Group / Preisgruppe	Nazwa Tkaniny / Fabric Name / Stoffe	Standard Collection
1	Alba	3005 • 6005 • 6026 • 6031 • 7026 • 8003 • 8010 • 8078
	Evo	EV-1 • EV-2 • EV-5 • EV-10 • EV-11 • EV-14 • EV-24 • EV-25
	Next	NX-1 • NX-7 • NX-10 • NX-11 • NX-12 • NX-14 • NX-15 • NX-16
2	Cura	60110 • 60999 • 61168 • 62083 • 66167 • 66170 • 68182 • 68186
	Softline	SL-10 • SL-16 • SL-18 • SL-19 • SL-21 • SL-27 • SL-28
	Sprint	PS004 • PS010 • PS028 • PS030 • PS033 • PS039 • PS040 • PS041
	Valencia™	107-0002 • 107-0034 • 107-2107 • 107-2116 • 107-4003 • 107-4042 • 107-4045 • 107-9035
	Velvet	Copper 126 • Emerald 184 • Eucalyptus 193 • Lavender 71 • Navy 49 • Niagara 158 • Ocre 23 • Winered 39
	Xtreme	YS009 • YS026 • YS047 • YS079 • YS081 • YS094 • YS096 • YS136
3	Oceanic	OOC01 • OOC04 • OOC06 • OOC08 • OOC11 • OOC12 • OOC13 • OOC16
	Select	60132 • 60999 • 61186 • 62097 • 65117 • 67097 • 67098 • 68210
	Step	60090 • 60091 • 60999 • 62057 • 63075 • 66152 • 67004 • 68161
	Synergy	LDS08 • LDS16 • LDS17 • LDS49 • LDS56 • LDS62 • LDS73 • LDS74
4	Skóra / Leather / Leder	S-10 • S-16 • S-18 • S-19 • S-21 • S-27 • S-28
5	Skóra / Leather / Leder Premium	2180 • 2760 • 2840 • 2845 • 2875 • 2900
	Rhythm	Rhythm 60165 • Rhythm 60176 • Rhythm 60999 • Rhythm 63067 • Rhythm 66152 • Rhythm 68121
	Runner	Runner 60011 • Runner 60061 • Runner 60999
	String	String 60118 • String 60999

Wykończenia / Finishes / Oberflächen

# Alba Evo Next



## Standard Collection

profim

Alba

grupa cenowa 1

3005	7026
6005	8003
6026	8010
6031	8078

## Extended Collection

Wszystkie kolory poza standardowymi dostępne są z terminem realizacji 6-8 tygodni. Szczegóły wyceny dostępne są u właściwego RDS (Regionalnego Dyrektora Sprzedaży).



4007



4027



4004



4030



3005



2036



2005



1006



1011



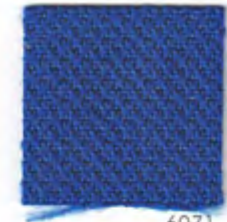
5004



6005



6026



6071



6080



6098



6007



6031



7026



7011



7013



7029



8078



8003



8010



8033

# Standard Collection

① **Evo**



**COMPOSIZIONE**  
100% Poliestere

**PESO**  
450 ± 5% g/ml  
320 ± 5% g/m²

**ALTEZZA**  
140 ± 2% cm

**RESISTENZA ALL'ABRASIONE**  
(Martindale)  
UNI EN ISO 12947/2  
100.000 ± 10% cicli

**PILLING**  
UNI EN ISO 12945/2  
5 (foto standard)  
Tolleranza: da 4 a 5

**SOLIDITÀ ALLA LUCE**  
UNI EN ISO 105-B02  
6 (scala blu)  
Tolleranza: da 5 a 8

**SOLIDITÀ ALLO SFREGAMENTO**  
UNI EN ISO 105-X12  
4/5 (scala grigi)  
Tolleranza: da 4 a 5

**REAZIONI AL FUOCO**  
Può superare:  
EN 1021/1-2  
CRIB 5  
BS 7176 Medium Hazard  
California TB117  
UNI 9175 Class 1IM

Il grado di resistenza al fuoco dipende dal tipo di schiuma utilizzata

**COLORE**  
Leggere differenze di colore fra una partita e l'altra sono da considerarsi normali

**MANUTENZIONE E LAVAGGIO**



**COMPOSITION**  
100% Polyester

**WEIGHT**  
450 ± 5% g/ml  
320 ± 5% g/m²

**WIDTH**  
140 ± 2% cm

**ABRASION RESISTANCE**  
(Martindale)  
UNI EN ISO 12947/2  
100.000 ± 10% rubs

**PILLING**  
UNI EN ISO 12945/2  
5 (standard pictures)  
Tolerance: from 4 to 5

**LIGHT FASTNESS**  
UNI EN ISO 105-B02  
6 (blue scale)  
Tolerance: from 5 to 8

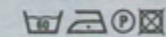
**FASTNESS TO RUBBING**  
UNI EN ISO 105-X12  
4/5 (grey scale)  
Tolerance: from 4 to 5

**FLAMMABILITY**  
Can meet:  
EN 1021/1-2  
CRIB 5  
BS 7176 Medium Hazard  
California TB117  
UNI 9175 Class 1IM

Flame retardant performance is dependent upon the foam used

**COLOUR**  
Slight color differences between one lot and another have to be considered within commercial tolerance

**CLEANING AND WASHING**



**COMPOSITION**  
100% Polyestere

**POIDS**  
450 ± 5% g/ml  
320 ± 5% g/m²

**LARGEUR**  
140 ± 2% cm

**RÉSISTANCE À L'ABRASION**  
(Martindale)  
UNI EN ISO 12947/2  
100.000 ± 10% tours

**PILLING**  
UNI EN ISO 12945/2  
5 (photos standard)  
Tolérance: de 4 à 5

**SOLIDITÉ À LA LUMIÈRE**  
UNI EN ISO 105-B02  
6 (échelle des bleu)  
Tolérance: de 5 à 8

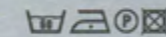
**SOLIDITÉ AU FROTTEMENT**  
UNI EN ISO 105-X12  
4/5 (échelle des gris)  
Tolérance: de 4 à 5

**CLASSEMENT AU FEU**  
Peut surmonter:  
EN 1021/1-2  
CRIB 5  
BS 7176 Medium Hazard  
California TB117  
UNI 9175 Class 1IM

Performance de flammabilité dépend de la mousse utilisée

**COLORIS**  
Légères différences de couleur entre un lot et l'autre doivent être considérés comme étant normales

**NETTOYAGE ET LAVAGE**



**ZUSAMMENSETZUNG**  
100% Polyestere

**GEWICHT**  
450 ± 5% g/ml  
320 ± 5% g/m²

**BREITE**  
140 ± 2% cm

**SCHEUERFESTIGKEIT**  
(Martindale)  
UNI EN ISO 12947/2  
100.000 ± 10% Scheuertouren

**PILLING**  
UNI EN ISO 12945/2  
5 (standard Bilder)  
Toleranz: von 4 bis 5

**LICHTECHTHEIT**  
UNI EN ISO 105-B02  
6 (Blaumaßstabe)  
Toleranz: von 5 bis 8

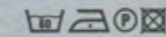
**REIBECHTHEIT**  
UNI EN ISO 105-X12  
4/5 (Graumaßstabe)  
Toleranz: von 4 bis 5

**FEUERSICHERUNG**  
Überwunden:  
EN 1021/1-2  
CRIB 5  
BS 7176 Medium Hazard  
California TB117  
UNI 9175 Class 1IM

Schwerentflammbarkeit hängt von verwendetem schaum ab

**FARBABWEICHUNGEN**  
Leichte Farbunterschiede sind zwischen zwei Partien als normal zu betrachten

**REINIGUNG UND WASCHEN**

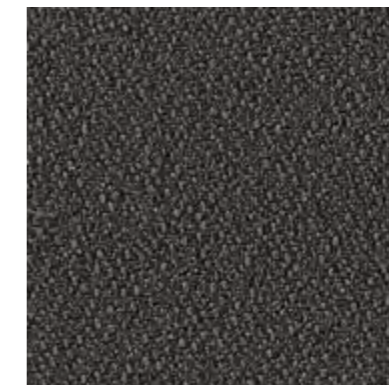


ED. 01

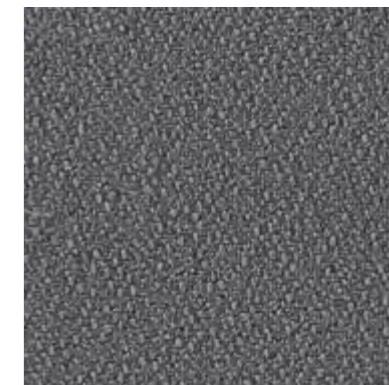
FIDIVI TESSITURA VERGNANO S.p.A.  
Regione Masio 19 bis 10046 Poirino (TO) ITALY  
tel. +39 0119430662 fax +39 0119430478  
www.fidivi.com info@fidivi.com



EV-11



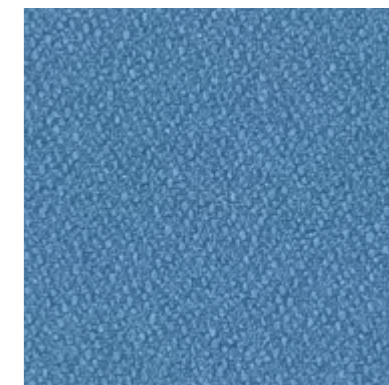
EV-1



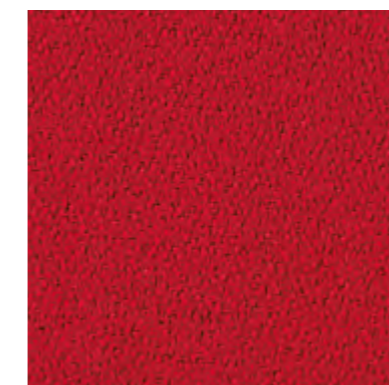
EV-14



EV-10



EV-25



EV-5



EV-2



EV-24

# Evo<sup>1</sup>

## Extended Collection

## Standard Collection

# Next<sup>1</sup>



EV-4



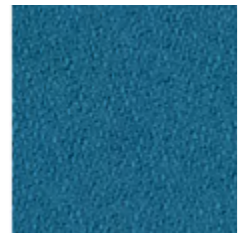
EV-19



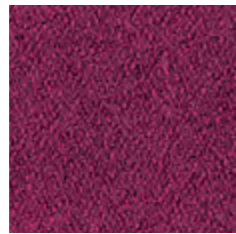
EV-20



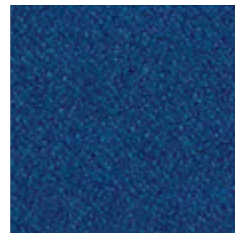
EV-18



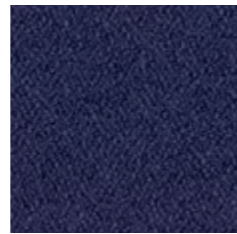
EV-23



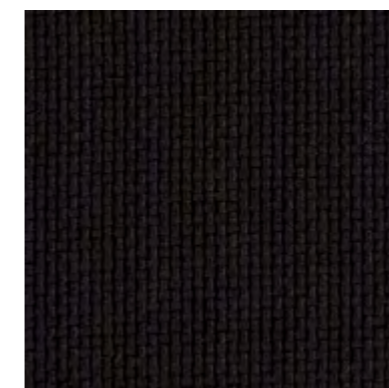
EV-21



EV-9



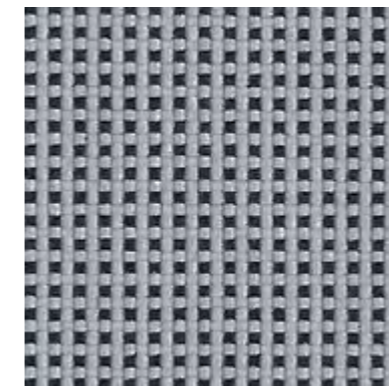
EV-22



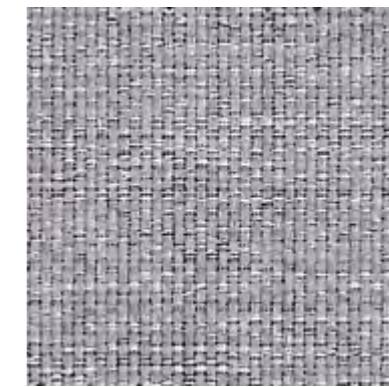
NX-16



NX-14



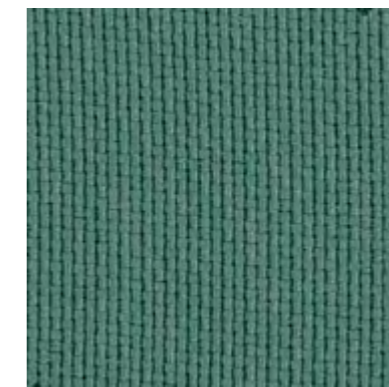
NX-12



NX-10



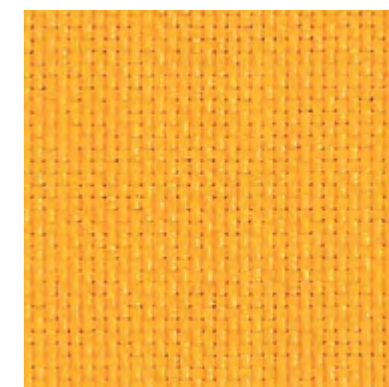
NX-15



NX-11



NX-7



NX-1

## PL

**Skład:**  
100% poliester

**Gramatura:**  
320 g/m<sup>2</sup>

**Odporność na ścieranie:** 180000 cykli Martindale'a (BS EN ISO 12947-2), **Odporność na piling:** 5 (PN-EN ISO 12945-2), **Trudnozapałność – papieros:** EN 1021-1, **Trudnozapałność – zapalka:** EN 1021-2, **Odporność na światło:** 4-5 (EN ISO 105-B02), **Oznaczenie formaldehydu:** PN-EN ISO 14184-1, **Odporność barwy na rozpuszczalniki organiczne:** 5 (PN-EN ISO 105-X-05), **Odporność barwy na działanie potu:** 5 (PN-EN ISO 105-E04), **Oznaczenie zawartości związków azowych:** PN-EN 14362-1, **Odporność barwy na tarcie:** 4-5 (PN-EN ISO 105-X12), **Odporność na przesunięcie w szwie:** 4 mm, kat. A (PN-EN ISO 13936-2), **Odporność barwy na płamienie wodą:** 5 (BS EN ISO 105 E16)

### Pielęgnacja:

- czyszczenie chemiczne: dopuszcza się użycie nadchloru etylenu oraz wodnego roztworu węgla fluoru,
- czyszczenie mechaniczne: czyścić na całej powierzchni szmatką zwilżoną wodą

## EN

**Composition:**  
100% polyester

**Weight:**  
320 g/m<sup>2</sup>

**Abrasion resistance:** 180000 Martindale cycles (BS EN ISO 12947-2), **Pilling resistance:** 5 (PN-EN ISO12945-2), **Flammability – cigarette:** EN 1021-1, **Flammability – match:** EN 1021-2, **Light fastness:** 4-5 (EN ISO 105-B02), **Determination of formaldehyde:** PN-EN ISO 14184-1, **Colour fastness to organic solvents:** 5 (PN-EN ISO 105-X05), **Colour fastness to perspiration:** 5 (PN-EN ISO 105-E04), **Determination of azo dyes:** PN-EN 14362-1, **Colour fastness to rubbing:** 4-5 (PN-EN ISO 105-X12), **Slippage resis-tance:** 4 mm cat. A (PN-EN ISO 13936-2), **Colour fastness to water spotting:** 5 (BS EN ISO 105 E16)

### Maintenance:

- dry cleaning: with tetrachloroethylene and water solution of carbonate fluoride,
- mechanical cleaning: clean on the whole surface with a damp cloth

## DE

**Zusammensetzung:**  
100% Polyester

**Gewicht:**  
320 g/m<sup>2</sup>

**Scheuerfestigkeit:** 180000 Martindale Scheuertouren (BS EN ISO12947-2), **Peelingfestigkeit:** 5 (PN EN ISO 12945-2), **Brandschutz – Zigarettentest:** EN 1021-1, **Brandschutz – Streichholztest:** EN 1021-2, **Lichtechtheit:** 4-5 (EN ISO 105-B02), **Bestimmung des Gehaltes an Formaldehyd:** PN-EN ISO 14184-1, **Farbechtheit gegen organische Lösemittel:** 5 (PN-EN ISO 105-X05), **Farbechtheit gegen Schweiß:** 5 (PN-EN ISO 105-E04), **Nachweis der Verwendung bestimmter Azofarbstoffe mit und ohne Extraktion der Faser:** PN-EN 14362-1, **Farbechtheit gegen Reiben:** 4-5 (PN-EN ISO105-X12), **Verfahren mit festgelegter Kraft:** 4 mm kat. A (PN-EN ISO13936-2), **Farbechtheit gegen Wasserflecken auf Möbelbezugsstoffen:** 5 (BS EN ISO 105 E16)

### Reinigung:

- chemische Reinigung: Flecken mit Enzymmittel behandeln
- mechanische Reinigung: nicht nur Flecken sondern die ganze Stofffläche mit einem Tuch anfeuchten und abwischen

Przedstawione wzory wykończeń nie stanowią oferty w rozumieniu Kodeksu Cywilnego. W ramach stałego doskonalenia produktów firma zastrzega sobie prawo do wprowadzania zmian w ofercie.

The offer presented in the pattern book is not a valid legal offer. In policy of continuous product improvement our company reserves right to make changes at any time without prior notice.

Dieser Katalog ist kein Angebot im rechtlichen Sinn. Wir behalten uns Änderungen der Produkten im Sinne einer technischen Entwicklung oder Änderungen in Form und Farbe vor.

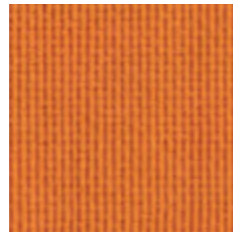


# Next<sup>1</sup>

## Extended Collection



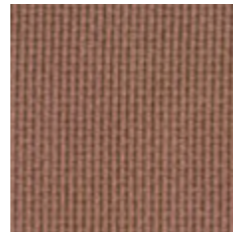
NX-2



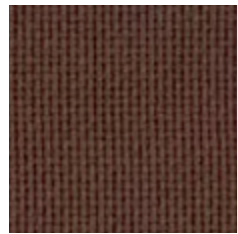
NX-3



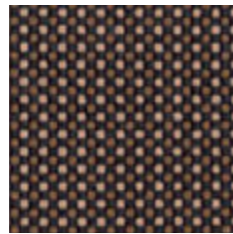
NX-5



NX-6



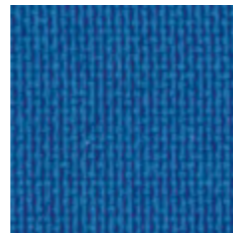
NX-8



NX-4



NX-9



NX-13

# Cura Softline Sprint Valencia<sup>TM</sup> Velvet Xtreme

### PL

**Skład:**  
100% poliester

**Gramatura:**  
340 g/m<sup>2</sup>

**Odporność na ścieranie:** 100000 cykli Martindale'a (PN-EN ISO 12947-2),  
**Odporność na piling:** 5 (PN-EN ISO 12945-2), **Trudnozapałność – papieros:** PN-EN 1021-1, **Trudnozapałność – zapalka:** PN-EN 1021-2, **Odporność na światło:** 5 (PN-EN ISO 105-B02)

**Pielęgnacja:**

- czyszczenie chemiczne: dopuszcza się użycie nadchlorku etylenu oraz wodnego roztworu węgla fluoru,
- czyszczenie mechaniczne: czyścić na całej powierzchni szmatką zwilżoną wodą,
- nie moczyc miejscowo,
- chronić od bezpośredniego działania słońca,
- odkurzać regularnie w delikatny sposób,
- nie należy szorować ani używać twardej szczotki,
- nie używać detergentów do mycia naczyń ani prania,
- suszyć w cieniu, z daleka od źródeł ciepła

### EN

**Composition:**  
100% polyester

**Weight:**  
340 g/m<sup>2</sup>

**Abrasion resistance:** 100000 Martindale cycles (PN-EN ISO 12947-2), **Pilling resistance:** 5 (PN-EN ISO 12945-2), **Flammability – cigarette:** PN-EN 1021-1, **Flammability – match:** PN-EN 1021-2, **Light fastness:** 5 (PN-EN ISO 105-B02)

**Maintenance:**

- dry cleaning: with tetrachloroethylene and water solution of carbonate fluoride,
- mechanical cleaning: clean on the whole surface with a damp cloth
- do not soak locally
- protect from direct sun
- vacuum regularly using low suction
- don't scrub or use stiff brush
- don't use dishwashing or laundry detergents
- dry in the shade, away from direct heat

### DE

**Zusammensetzung:**  
100% Polyester

**Gewicht:**  
340 g/m<sup>2</sup>

**Scheuerfestigkeit:** 100000 Martindale Scheuertouren (PN-EN ISO 12947-2), **Peelingfestigkeit:** 5 (PN-EN ISO 12945-2), **Brandschutz – Zigarettentest:** PN-EN 1021-1, **Brandschutz – Streichholztest:** PN-EN 1021-2, **Lichtecheit:** 5 (PN-EN ISO 105-B02)

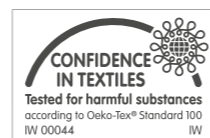
**Reinigung:**

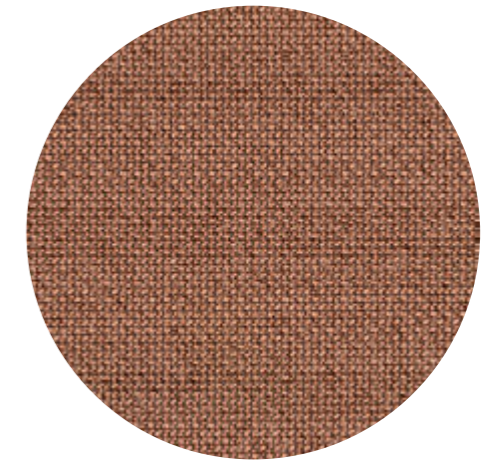
- chemische Reinigung: Flecken mit Enzymmittel behandeln
- mechanische Reinigung: nicht nur Flecken sondern die ganze Stofffläche mit einem Tuch anfeuchten und abwischen,
- vor Sonneneinstrahlung schützen
- regelmässig absaugen
- keine Lösungsmittel und Detergentien anwenden
- im Schatten abtrocknen

Przedstawione wzory wykończeń nie stanowią oferty w rozumieniu Kodeksu Cywilnego. W ramach stałego doskonalenia produktów firma zastrzega sobie prawo do wprowadzania zmian w ofercie.

The offer presented in the pattern book is not a valid legal offer. In policy of continuous product improvement our company reserves right to make changes at any time without prior notice.

Dieser Katalog ist kein Angebot im rechtlichen Sinn. Wir behalten uns Änderungen der Produkten im Sinne einer technischen Entwicklung oder Änderungen in Form und Farbe vor.





## CURA

by Gabriel

### Standard Collection

profim

Cura

grupa  
cenywa 2

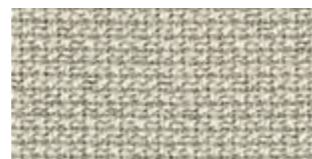
60110	66167
60999	66170
61168	68182
62083	68186

### Extended Collection

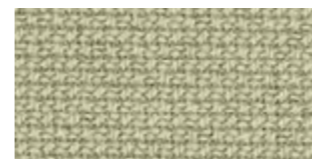
Wszystkie kolory poza standardowymi dostępne są z terminem realizacji 6-8 tygodni. Szczegóły wyceny dostępne są u właściwego RDS (Regionalnego Dyrektora Sprzedaży).



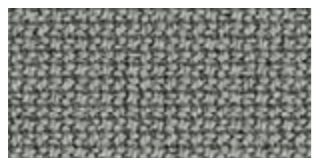
60000



61232



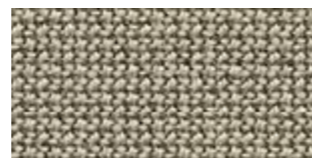
62125



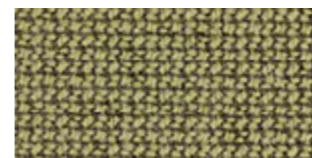
60327



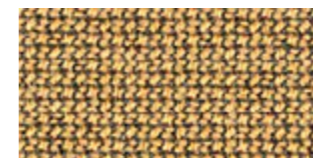
60112



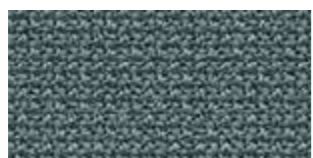
61168



62126



61233



66166



60110



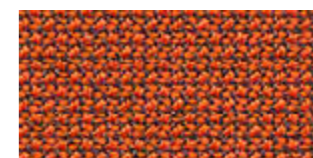
61259



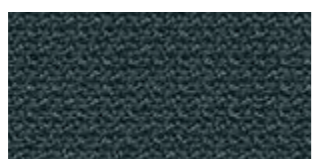
62084



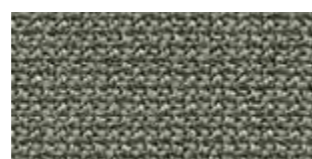
61260



63078



66165



60109



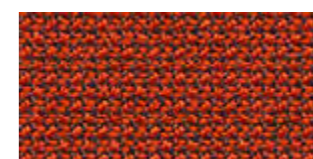
61169



62083



61257



63012



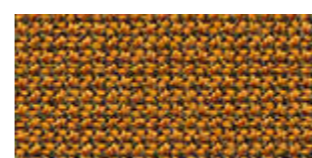
60111



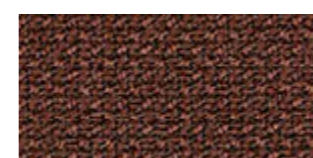
60999



60019



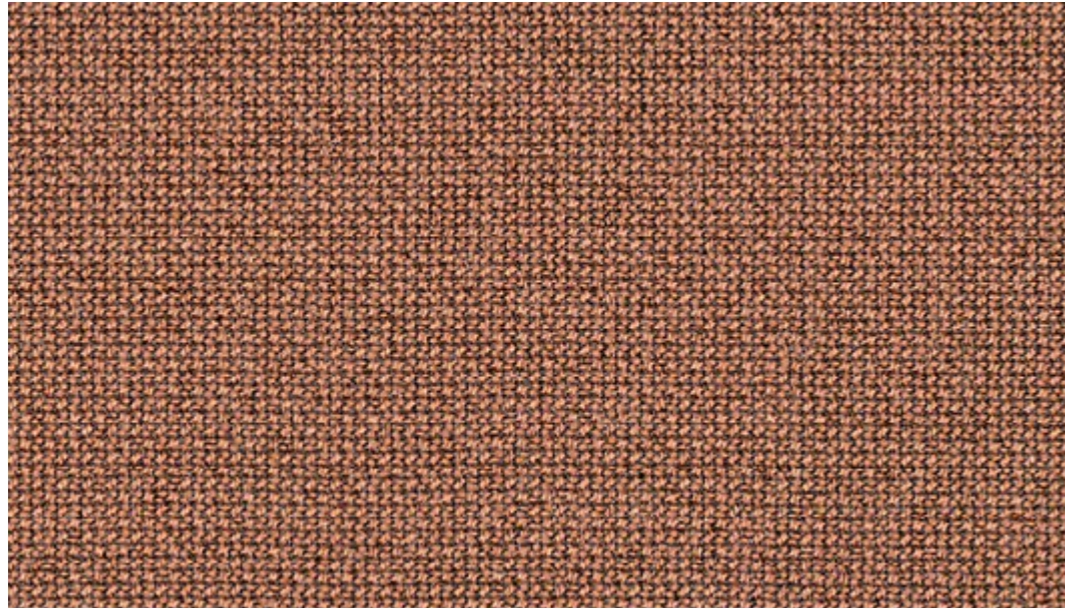
62082



61258



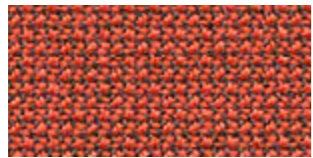
64196



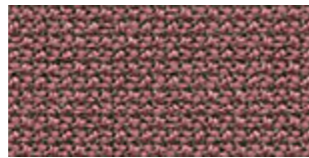
61257



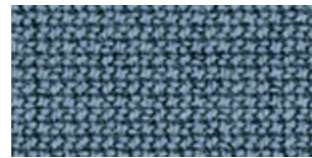
64240



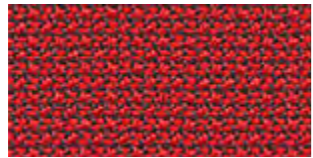
64197



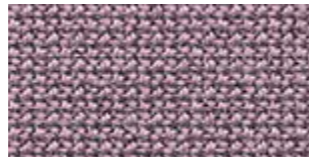
64195



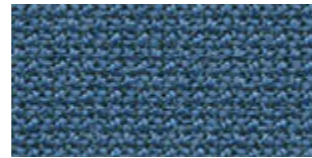
66239



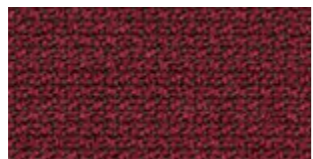
64013



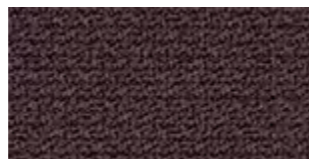
64194



65105



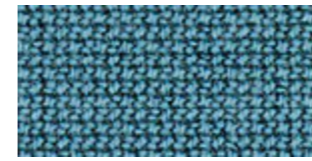
64252



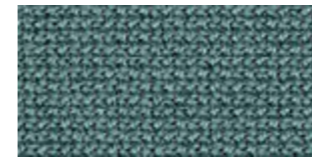
65137



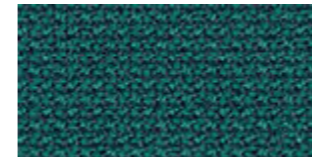
66169



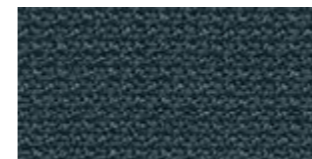
66240



66167



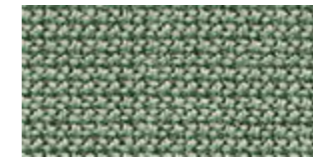
67084



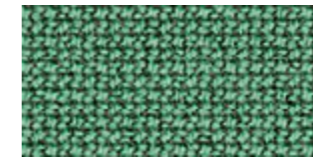
66170



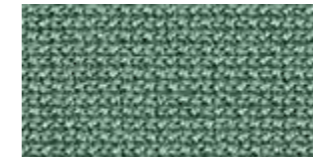
68262



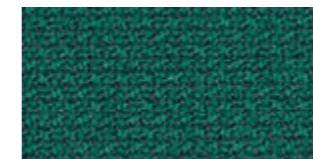
68186



68263



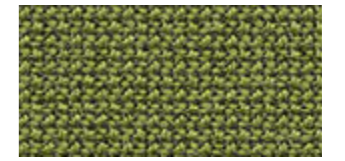
68187



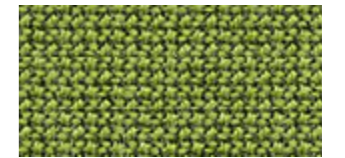
68264



68261



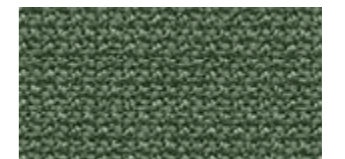
68181



68180



68183



68182

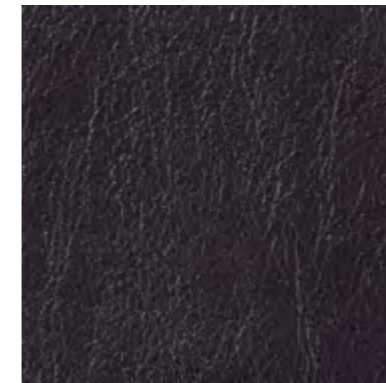
# Standard Collection

# ② Softline

## CURA

Cura specifications: [www.gabriel.dk](http://www.gabriel.dk)

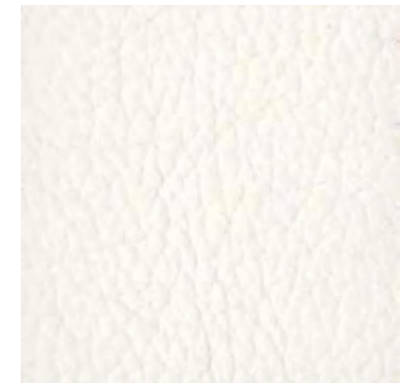
Please be aware that the PDF colour shades can appear different from the real fabric colours.  
We advise you to request actual fabric samples before ordering.



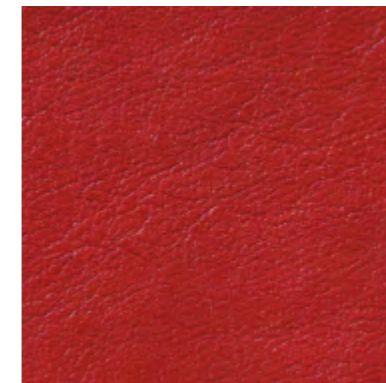
SL-18



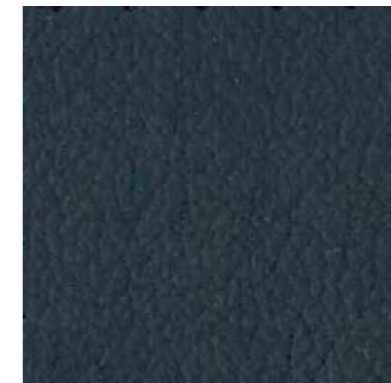
SL-16



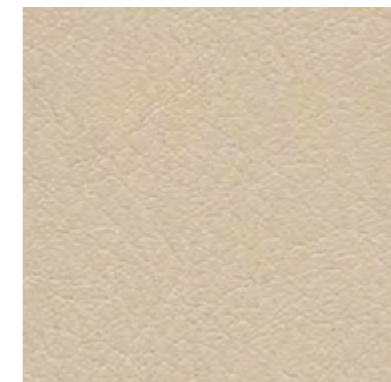
SL-28



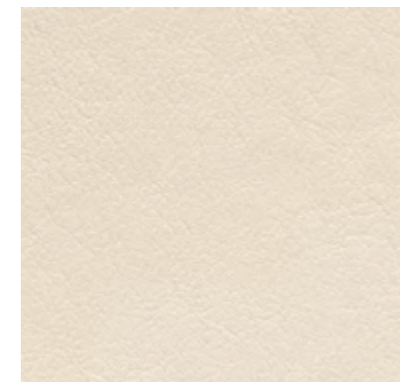
SL-19



SL-27



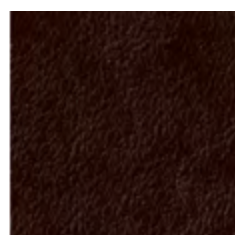
SL-21



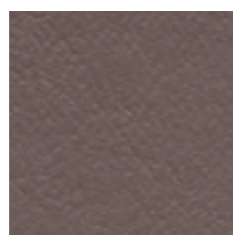
SL-10

# Softline<sup>2</sup>

## Extended Collection



SL-20



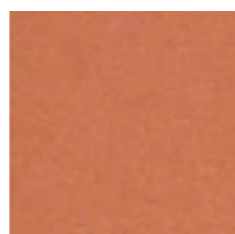
SL-22



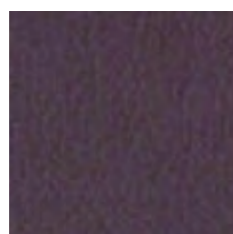
SL-23



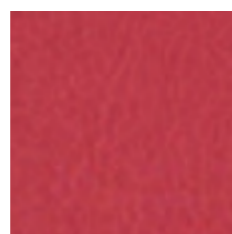
SL-26



SL-24



SL-29



SL-25

### PL

#### Skład:

Powłoka: 100% PU  
Nośnik: 100% bawełna/PES

#### Gramatura:

220 g/m<sup>2</sup>

**Odporność na ścieranie:** 50000 cykli Martindale'a (PN-EN ISO 5470-2),  
**Trudnozapałność – papieros:** PN-EN 1021-1

#### Pielęgnacja:

- czyścić regularnie roztworem mydła w ciepłej wodzie z użyciem miękkiej szmatki lub gąbki
- miejsca bardziej zabrudzone pocierać miękką szczotką, po wyczyszczeniu spłukać powierzchnię wodą i wytrzeć miękką szmatką
- nie stosować past, wosków, sprayów, silnych detergentów, rozpuszczalników i środków czyszczących zawierających rozpuszczalniki

### EN

#### Composition:

Surface: 100% PU  
Basic material: 100% cotton/PES

#### Weight:

220 g/m<sup>2</sup>

**Abrasion resistance:** 50000 Martindale cycles (PN-EN ISO 5470-2), **Flammability – cigarette:** PN-EN 1021-1

#### Maintenance:

- clean with a damp soapy cloth and rinse well with clean water
- a soft brush can be used for heavy soiling
- do not use solvents, bleaches, abrasives, synthetic detergents, wax polishes or aerosol sprays

### DE

#### Zusammensetzung:

Oberfläche: 100% PU  
Gewebe: 100% Baumwolle/PES

#### Gewicht:

220 g/m<sup>2</sup>

**Scheuerfestigkeit:** 50000 Martindale Scheuertouren (PN-EN ISO 5470-2), **Brandschutz – Zigarettentest:** PN-EN 1021-1

#### Reinigung:

- regelmässig mit einem weichen Baumwollappen unter Zusatz der Seifenlösung und lauwarmes Wasser reinigen
- falls schwerer Flecken mit einer weichen Bürste oder einem Schwamm leicht reiben, mit Wasser abwischen und einem trockenen Lappen abtupfen
- keine Pasten, Wachs, Sprays, Lösungsmittel, Detergentien anwenden



# Sprint

---

## camira

## Standard Collection

profim

### Sprint

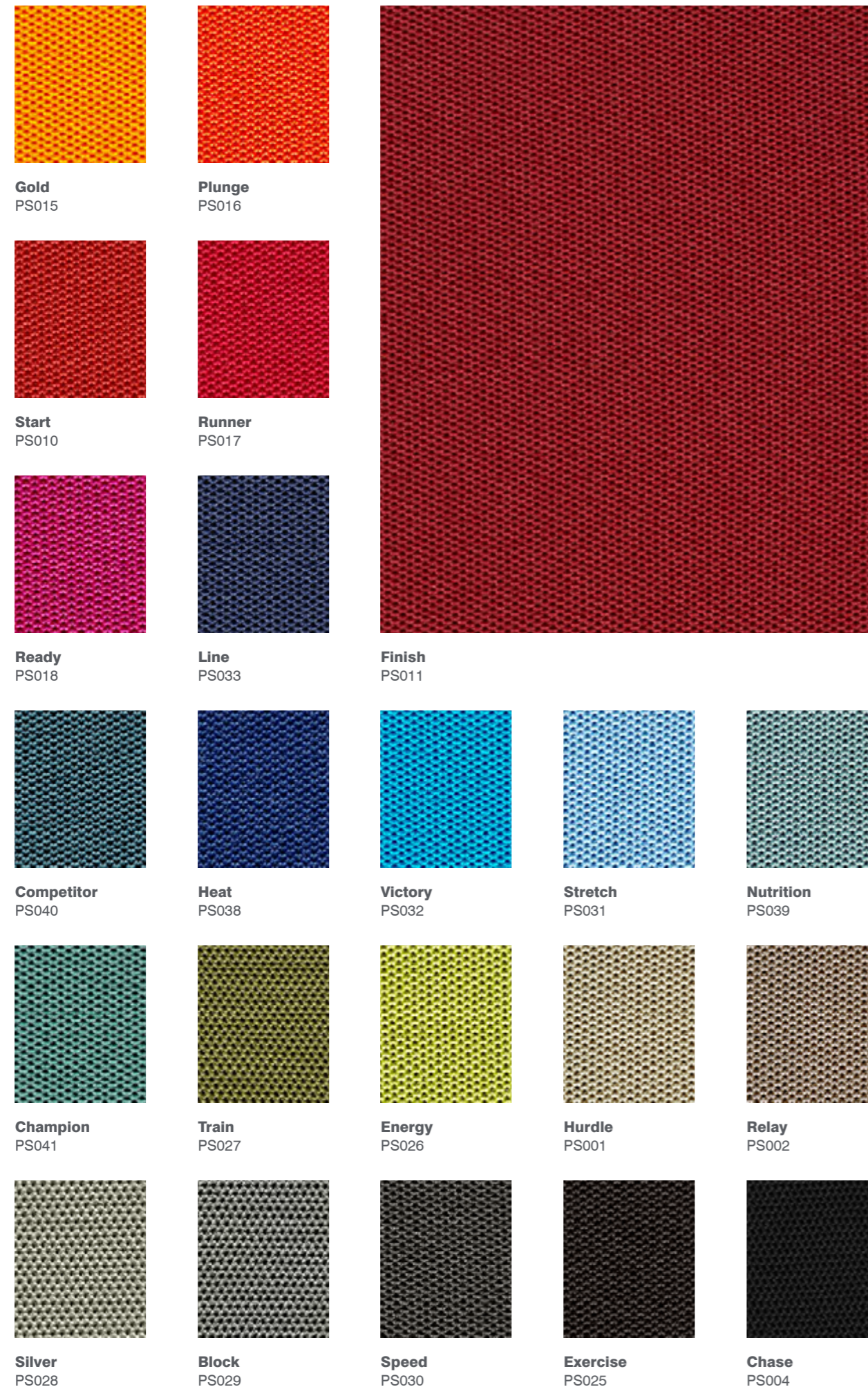
grupa cenowa <sup>2</sup>

PS004	PS033
PS010	PS039
PS028	PS040
PS030	PS041

## Extended Collection

Wszystkie kolory poza standardowymi dostępne są z terminem realizacji 6-8 tygodni. Szczegóły wyceny dostępne są u właściwego RDS (Regionalnego Dyrektora Sprzedaży).

Photographic fabric scans are not colour accurate. Always request actual fabric samples before ordering.



## Sprint - Product information



Sprint is a classic stretch knit product with a smooth macro cellular construction and a classic design that will stand the test of time. Sprint has multi-directional stretch for excellent upholsterability on task chair bases and backs.

The flexibility and performance of this fabric was inspired by dynamic sportswear reflecting our pride in hosting the London 2012 Olympics and the endurance of the winning Team GB!



## Technical information

### UK

**Composition**  
100% Polyester

**Environment**  
Certified to Indoor Advantage™ Gold  
Non metallic dyestuffs

**Width**  
150 cm minimum

**Weight**  
325 g/m<sup>2</sup> ±5% (488 g/lin.m ±5%)

**Abrasion Resistance\***  
Heavy duty / 10 year guarantee  
Independently certified to ≥100,000  
Martindale cycles

**Flammability**  
EN 1021 - 1 (cigarette)  
EN 1021 - 2 (match)  
BS 7176 Low Hazard  
UNI 9175 Classe 1 IM  
BS 476 Part 7 Class 1 (Adhered)  
EN 13501-1 Un-adhered Class B, s1, d0  
*Note: Flammability performance is dependent on components used. Our certificates show what substrates have been used in our tests. For composite tests customers must ensure their complete furniture meets the necessary standards.*

**Light Fastness**  
5 (ISO 105 - B02)

**Fastness to Rubbing**  
Wet: 4, Dry: 4 (ISO 105 - X12)

**Bleach Cleanable**  
ISO 105 E03 colour change 4 for dilution factor 1:4 chlorine solution

**Cleaning**  
Vacuum regularly. Wipe with a damp cloth using a proprietary upholstery shampoo/soap. For deeper cleaning use steam, bleach, alcohol or professionally dry clean. Can be washed at 60°C. Full details can be found in our cleaning and disinfection guide.

\*Abrasion testing produces a wide variability of results even from the same test sample. The independent certificate of ≥100,000 cycles is available on our website or from our customer service team. Internally we also specify this product at >100,000 cycles which we believe is realistic for repeatability of testing. Please be aware that abrasion testing alone is not a reliable indicator of the actual wear performance of fabrics. We're so confident in the durability of our products that we provide a robust 10 year guarantee (full details available).

Please note that seam performance is dependent on the seam construction and needle and thread type. We recommend that appropriate sewing advice be taken.

Batch to batch variations in shade may occur within commercial tolerances. We reserve the right to alter technical specifications without notice. The Unregistered Design Rights and the Copyright in all designs are the exclusive property of Camira Fabrics Limited.

### D

**Zusammensetzung**  
100% Polyester

**Umweltfreundlich**  
Nach Zertifikat Indoor Advantage™ Gold  
Nicht schwermetallhaltige Farbstoffe

**Breite**  
150 cm nutzbare Breite

**Gewicht**  
325 g/m<sup>2</sup> ±5% (488 g/ldf.m ±5%)

**Scheuerfestigkeit\***  
Schwerer Objekteinsatz / 10 Jahre Garantie  
Extern zertifiziert mit ≥100,000  
Scheuertouren Martindale

**Feuersicherung**  
EN 1021 - 1 (Zigarettestest)  
EN 1021 - 2 (Streichholztest)  
BS 7176 Low Hazard  
UNI 9175 Classe 1 IM  
BS 476 Part 7 Class 1 (Adhered)  
EN 13501-1 Un-adhered Class B, s1, d0  
*Bemerkung: Die Schwerentflammbarkeit hängt von den verwendeten Komponenten ab. Unsere Zertifikate zeigen auf, welche Substrate bei den Tests verwendet wurden. Bei Verbundtests muss sichergestellt sein, daß das komplette Möbel den entsprechenden Standards entspricht.*

**Lichtechtheit**  
5 (ISO 105 - B02)

**Reibechtheit**  
Nass: 4, Trocken: 4 (ISO 105 - X12)

**Chlorbleiche-Beständig**  
ISO 105 E03 Farbänderung 4 bei einer 1:4 verdünnten Chlor-Lösung

**Reinigung**  
Regelmässig absaugen. Mit einem feuchten Tuch abwischen oder mit einem geeigneten Polstershampoo behandeln. Für eine Grundreinigung bitte Dampf, Chlorbleiche, Alkohol oder professionelle Trockenreinigung verwenden. Kann bei 60°C gewaschen werden. Weitere Informationen finden Sie in unserem Leitfaden zur Reinigung und Desinfektion.

\*Die Scheuerfestigkeitsprüfung ergibt selbst bei gleichen Testmustern stark abweichende Ergebnisse. Das Zertifikat eines unabhängigen Prüfinstitutes über ≥100,000 Scheuertouren erhalten Sie von unserem Vertriebsinnendienst oder auf unserer Webseite. Intern spezifizieren wir auch dieses Produkt mit >100,000 Scheuertouren, die in der Serienfertigung als realistisch angenommen werden. Bitte nehmen Sie zur Kenntnis, dass die Scheuerfestigkeitsprüfung allein keine Aussagekraft über die Langlebigkeit eines Bezugsstoffes hat. Wir sind von der Langlebigkeit unserer Produkte überzeugt und bieten daher 10 Jahre Garantie (Details auf Anfrage).

Eine optimale Nahtausreissfestigkeit hängt von der Nahtfahne, der verwendeten Nadel und dem Näh-Garn ab. Wir empfehlen daher Nähversuche durchzuführen.

Handelsübliche Farbabweichungen können auftreten und berechtigen nicht zur Reklamation. Wir behalten uns die Änderung technischer Spezifikationen vor. Die registrierten und nicht registrierten Urheberrechte der Dessinierungen sind ausschliessliches Eigentum der Camira Fabrics Limited.

### F

**Composition**  
100% Polyester

**Écologique**  
Certifié à Indoor Advantage™ Gold  
Teintures non métalliques

**Largeur**  
150 cm minimum

**Poids**  
325 g/m<sup>2</sup> ±5% (488 g/m.l ±5%)

**Résistance à l'abrasion\***  
Usage intense / garantie 10 ans  
Certificat indépendant ≥100,000  
cycles Martindale

**Flammabilité**  
EN 1021 - 1 (cigarette)  
EN 1021 - 2 (allumette)  
BS 7176 Low Hazard  
UNI 9175 Classe 1 IM  
BS 476 Part 7 Class 1 (Adhered)  
EN 13501-1 Un-adhered Class B, s1, d0  
*Notez: La performance de flammabilité dépend des composants utilisés. Nos certificats indiquent les substrats utilisés dans nos tests. Pour les tests composites, les clients doivent s'assurer que leurs meubles complets satisfont aux normes nécessaires.*

**Solidité à la lumière**  
5 (ISO 105 - B02)

**Solidité au Frottement**  
Mouillé: 4, Sec: 4 (ISO 105 - X12)

**Nettoyable au javel**  
ISO 105 E03 changement de couleur 4 pour le facteur de dilution 1:4 solution de chlore

**Nettoyage**  
Passez l'aspirateur régulièrement. Essuyez avec un chiffon humide en utilisant un shampooing/savon pour tissus d'ameublement exclusif. Pour un nettoyage en profondeur, utilisez la vapeur, javel, alcool ou un nettoyage à sec professionnel. Peut être lavé à la machine, programme maximum 60°C. Vous trouverez tous les détails dans notre guide de nettoyage et de désinfection.

\*Les tests de résistance à l'abrasion proposent une large variété de résultat final, parfois sur le même échantillon de tissu. Le certificat indépendant de ≥100,000 cycles est disponible sur notre site internet; vous pouvez également contacter notre Service Clients. Nous validons également – en interne – à >100,000 cycles; ce qui est, d'après nous, plus réaliste dans le but d'obtenir une continuité égale des résultats de tests. Merci de noter que l'abrasion seule ne constitue pas un indicateur de confiance dans la performance du tissu à long terme. Nous avons une confiance absolue en nos produits et leur durabilité, c'est pour cela que nous vous offrons une garantie robuste de 10 ans.

Veuillez noter que la performance du joint dépend de sa construction ainsi que de l'aiguille et du type de fil utilisés.

Une variation de couleurs peut provenir (commerciallement tolérable). Nous réservons le droit de changer les spécifications techniques sans préavis. Les Droits de Conception non-enregistrés et les droits d'auteur de tous les motifs sont la propriété exclusive de Camira Fabrics Limited.

### ES

**Composición**  
100% Poliéster

**Ambiental**  
Certificado de Indoor Advantage™ Gold  
Tintes no metálicos

**Ancho**  
150 cm mínimo

**Peso**  
325 g/m<sup>2</sup> ±5% (488 g/lin.m ±5%)

**Resistencia a la abrasión\***  
Garantía de 10 años con uso intenso  
independientemente del certificado de  
≥100,000 Ciclos Martindale

**Inflamabilidad**  
EN 1021 - 1 (cigarillo)  
EN 1021 - 2 (cerilla)  
BS 7176 Low Hazard  
UNI 9175 Classe 1 IM  
BS 476 Part 7 Class 1 (Adhered)  
EN 13501-1 Un-adhered Class B, s1, d0  
*Nota: El rendimiento de la inflamabilidad depende de los componentes usados. Nuestros certificados muestran qué substratos se han usado en nuestros tests. Para tests compuestos nuestros clientes deben asegurar si sus muebles cumplen la normativa al uso.*

**Solidez a la luz**  
5 (ISO 105 - B02)

**Solidez al rozamiento**  
Húmedo: 4, Seco: 4 (ISO 105 - X12)

**Posibilidad lavado con Lejía**  
ISO 105 E03 cambio color 4 para un factor de disolución 1:4 solución cloro

**Limpieza**  
Uso aspirador regularmente. Limpiar con un trapo usando jabón y agua o producto limpieza para tapicerías. Para una limpieza más profunda usen vapor, lejía, alcohol o limpieza en seco. Se puede lavar a 60°C. Los detalles completos se encuentran en nuestra guía de limpieza y desinfección.

\*Los Test de Abrasión producen unos resultados muy variables incluso con la misma muestra. El certificado de ≥100,000 ciclos Martindale está disponible en nuestra web o se puede pedir al Departamento Comercial. Internamente también certificamos este producto >100,000 ciclos, que pensamos que es lo más realista posible en este caso, con una repetición de resultados tan dispares. Tengan en cuenta que el Test de Abrasión solo no es un indicador fiable sobre el desgaste de un tejido. De hecho, estamos tan convencidos en la durabilidad de nuestros tejidos, que ofrecemos una garantía de 10 años (detalles completos disponibles).

Tenga en cuenta que el rendimiento de la costura depende de la construcción de la costura, además de la aguja y del tipo de rosca. Le recomendamos que se aconsejen para coser la costura.

Las variaciones de lote a lote en la sombra se puede producir dentro de tolerancias comerciales. Nos reservamos el derecho a efectuar modificaciones técnicas sin previo aviso. Los derechos sobre los diseños no registrados y los derechos de autor en todos los diseños son propiedad exclusiva de Camira Fabrics Limited.



# Valencia™

CONTRACT | MARINE INTERIORS | AUTOMOTIVE

**SPRADLING®**  
COATED FABRICS

## Standard Collection

profim

### Valencia

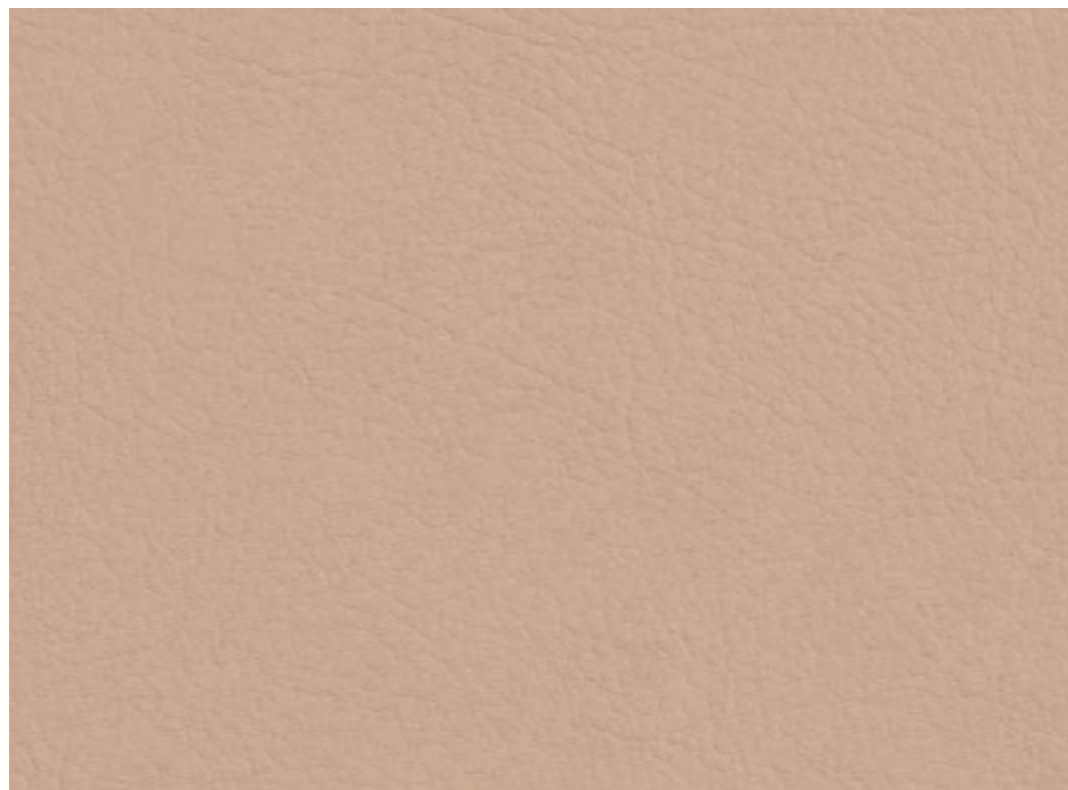
grupa cenowa 2

107-0002	107-4003
107-0034	107-4042
107-2107	107-4045
107-2116	107-9035

## Extended Collection

Wszystkie kolory poza standardowymi dostępne są z terminem realizacji 6-8 tygodni. Szczegóły wyceny dostępne są u właściwego RDS (Regionalnego Dyrektora Sprzedaży).

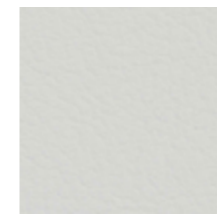




107-2113  
LOTUS



107-8020  
PEARLESSENCE (MET.)



107-9607  
PURE WHITE



107-8032  
WEISS



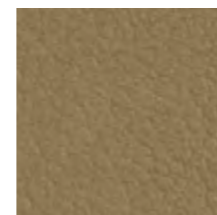
107-1048  
SISAL



107-1020  
IVORY (MET.)



107-1049  
LEINEN



107-6020  
GOLD (MET.)



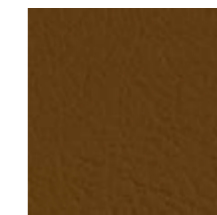
107-1001  
CHAMPAGNE



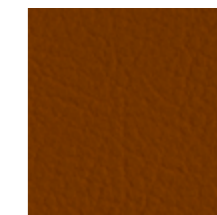
107-1050  
BEIGE



107-2117  
CASHMERE



107-0002  
COGNAC



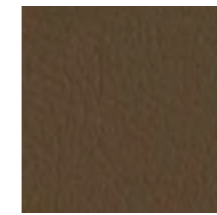
107-0035  
TERRACOTTA



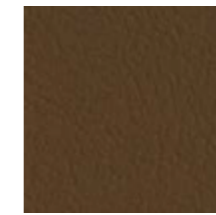
107-0034  
TAUPE



107-4044  
WARM GREY



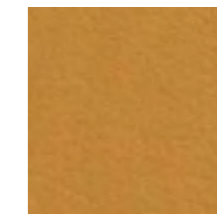
107-4001  
MUSHROOM



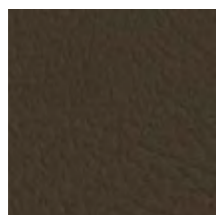
107-9001  
SUMATRA



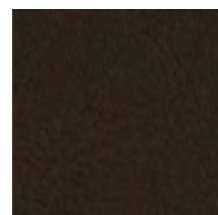
107-2115  
CHESTNUT



107-2116  
CAMEL



107-5002  
MOSS



107-4041  
METEOR



107-0020  
MOCCA



107-0001  
PRALINÉ



107-0033  
BUCHE



107-2001  
MERLOT



107-2062  
PORT



107-2074  
KIRSCH



107-2075  
ROT



107-2112  
TOMATO

Also available in BS 5852 Part 2 CRIB 5 quality      Also available in DIN 4102 B1 & NF P 92-503 M1 quality

No Master samples (not suitable for colour matching and quality control / testing purposes). Commercially acceptable colour shifts may occur between production runs. As such lot separation is recommended.

For Care and Cleaning instructions please visit our website [WWW.SPARDLING.EU](http://WWW.SPARDLING.EU)

[CLICK HERE TO SEE THE PRODUCT TECHNICAL SPECIFICATIONS](#)



CONTRACT



MARINE INTERIORS



AUTOMOTIVE

Colour Marked with has PERMABLOK<sup>3</sup><sup>®</sup> PLUS+  
ADVANCED VINYL PROTECTION



Also available in BS 5852 Part 2 CRIB 5 quality Also available in DIN 4102 BI & NF P 92-503 M1 quality

No Master samples (not suitable for colour matching and quality control / testing purposes). Commercially acceptable colour shifts may occur between production runs. As such lot separation is recommended.

For Care and Cleaning instructions please visit our website [WWW.SPRADLING.EU](http://WWW.SPRADLING.EU)

[CLICK HERE TO SEE THE PRODUCT TECHNICAL SPECIFICATIONS](#)



CONTRACT



MARINE INTERIORS



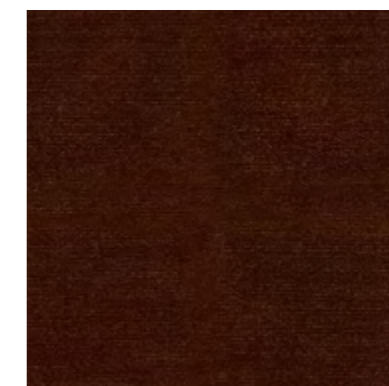
AUTOMOTIVE

**SPRADLING®**  
Inspiration that covers the world

For more info: [marketing.europe@spradling.group](mailto:marketing.europe@spradling.group)  
[WWW.SPRADLING.EU](http://WWW.SPRADLING.EU)



LAVENDER 71



WINERED 39



COPPER 126



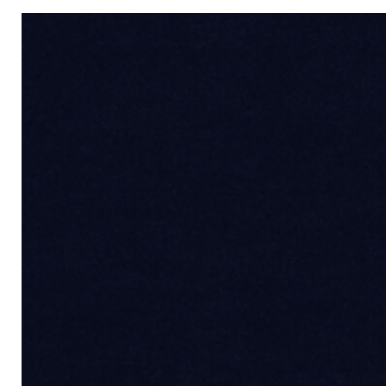
EMERALD 184



EUCALYPTUS 193



NIAGARA 158



NAVY 49



OCRE 23

# Velvet<sup>2</sup>

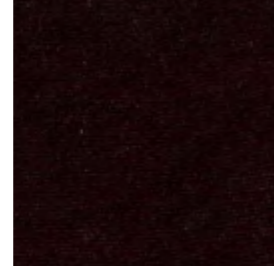
# Extended Collection



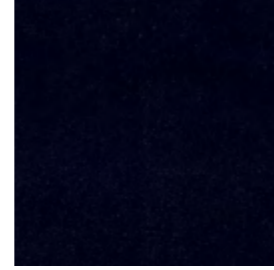
ONYX 169



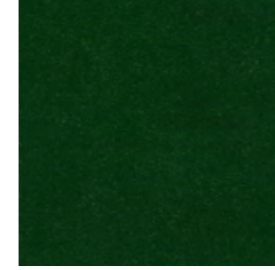
ESPRESSO 123



BLACKBERRY 177



DARKBLUE 48



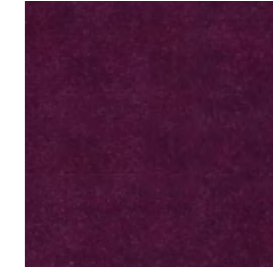
FOREST 162



TURTLE 88



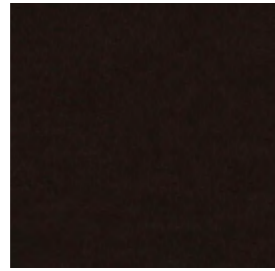
SCARLET 141



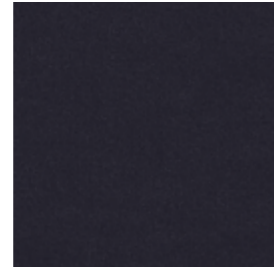
MAGNOLIA 160



HUNTER 156



DARKBROWN 18



ANTHRACITE 67



NIGHTSHADE 178



MOSS 59



SHITAKE 124



CARMINE 36



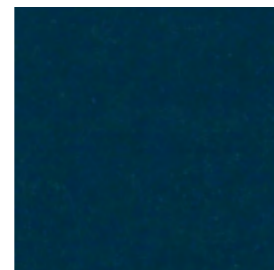
LIVER 10



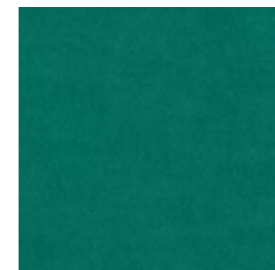
PLUMB 168



GREY 65



BLUE 45



TURQUOISE 44



SAFFRON 183



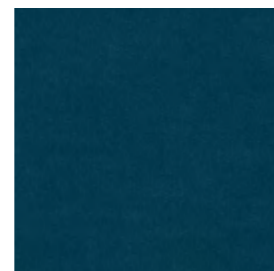
CINNAMON 94



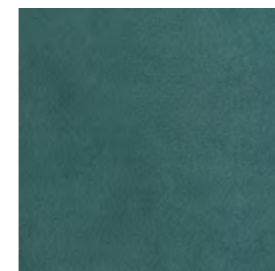
DOLPHIN 180



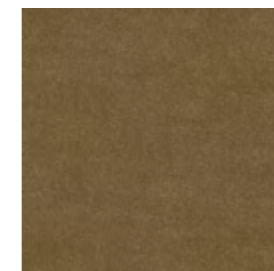
DENIM 153



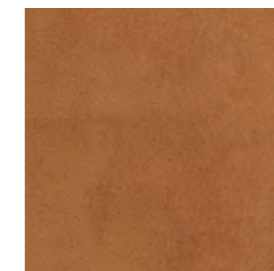
PETROL 56



TEAL 198



CAPPUCCINO 11



COGNAC 28



STEEL 149



IVORY 101



LILAC 70



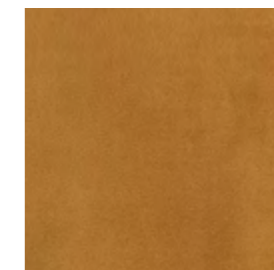
SKY 142



MINT 50



BEIGE 05



HONEY 202



BLOSSOM 166

# Xtreme

## camira

### Standard Collection

profim

---

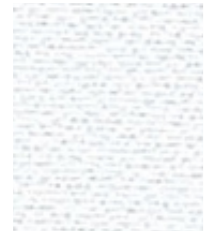
Xtreme

grupa  
cenowa 2

YS009	YS081
YS026	YS094
YS047	YS096
YS079	YS136

### Extended Collection

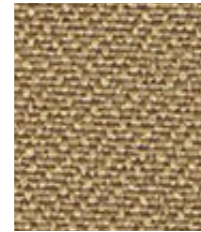
Wszystkie kolory poza standardowymi dostępne są z terminem realizacji 6-8 tygodni. Szczegóły wyceny dostępne są u właściwego RDS (Regionalnego Dyrektora Sprzedaży).



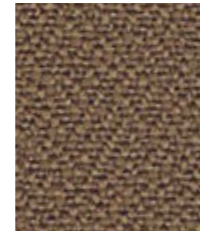
**Adobo**  
YS165



**Aruba**  
YS108



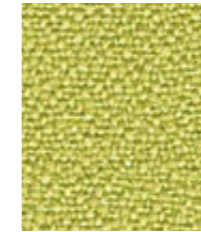
**Sandstorm**  
YS071



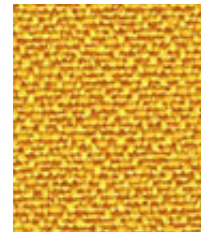
**Nougat**  
YS091



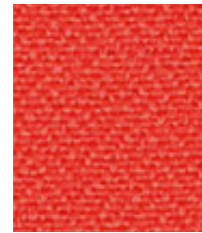
**Sombrero**  
YS046



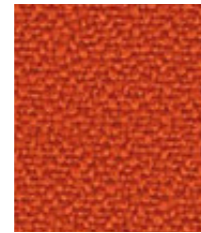
**Apple**  
YS096



**Solano**  
YS072



**Tortuga**  
YS168



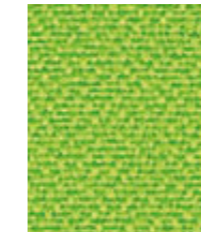
**Lobster**  
YS076



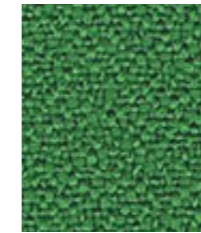
**Belize**  
YS105



**Panama**  
YS079



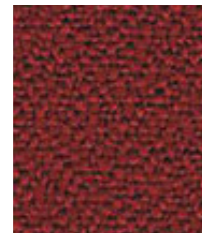
**Madura**  
YS156



**Lombok**  
YS159



**Diablo**  
YS101



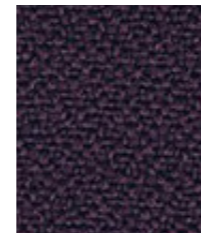
**Tokara**  
YS136



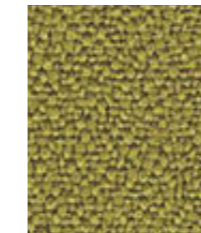
**Tobago**  
YA030



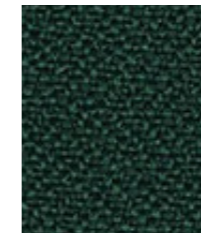
**Bridgetown**  
YS102



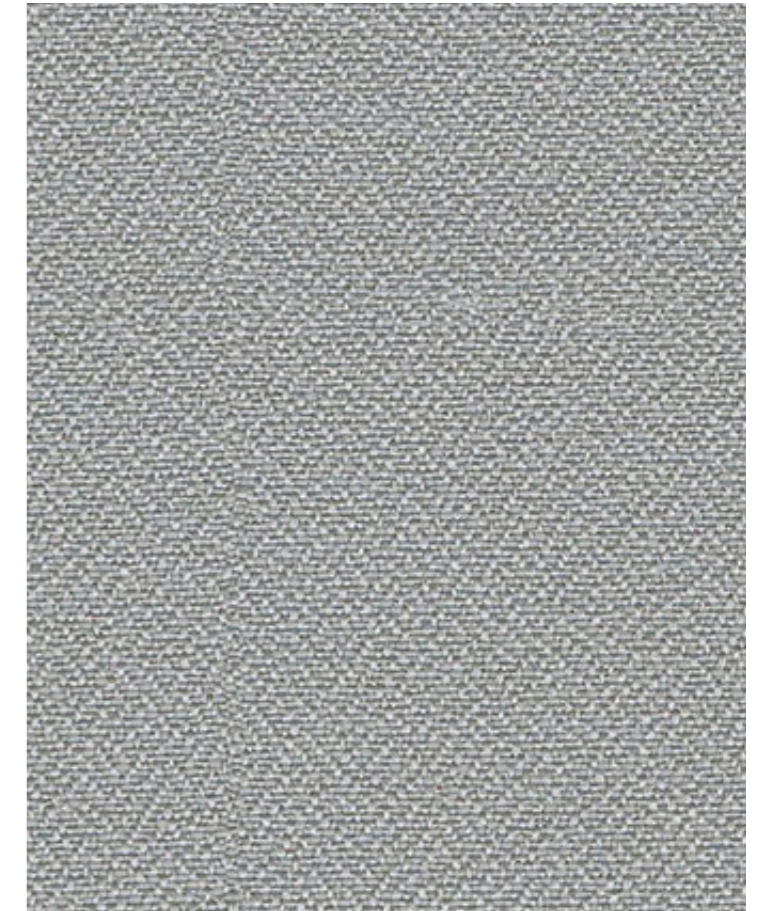
**Tarot**  
YS084



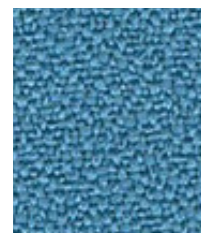
**Appledore**  
YS077



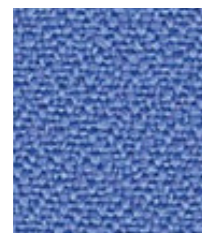
**Taboo**  
YS045



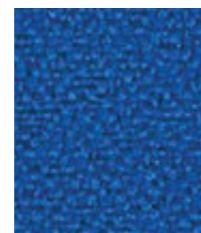
**Slip**  
YS094



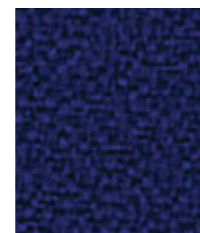
**Parasol**  
YS073



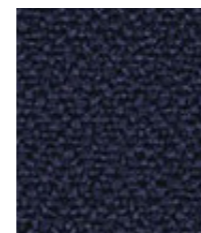
**Bluebell**  
YS097



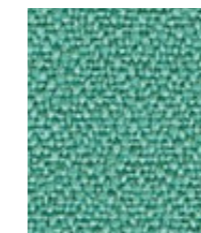
**Honeymoon**  
YS035



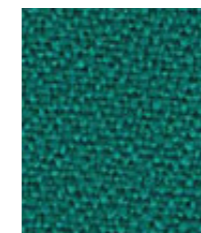
**Ocean**  
YS100



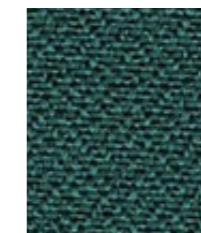
**Cayman**  
YS024



**Campeche**  
YS074



**Tonga**  
YS160



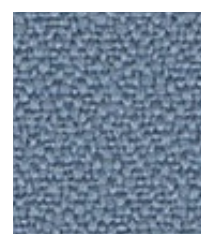
**Windjammer**  
YS047



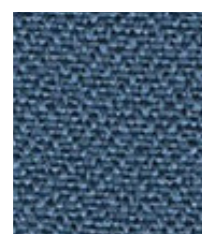
**Krabi**  
YS141



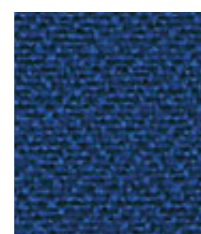
**Blizzard**  
YS081



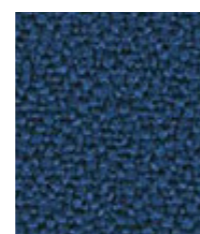
**Steel**  
YS095



**Martinique**  
YS004



**Scuba**  
YS082



**Curacao**  
YS005



**Costa**  
YS026



**Rum**  
YS173



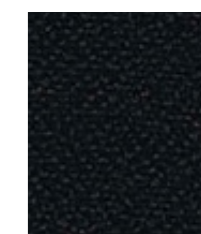
**Osumi**  
YS171



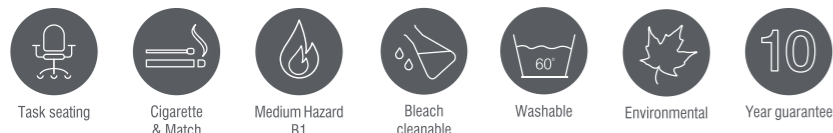
**Bonaire**  
YS172



**Padang**  
YS145



**Havana**  
YS009



Xtreme is a modern crepe weave fabric made from 100% post-consumer recycled polyester, diverting waste from landfill and saving virgin raw materials. Its stretch properties, coupled with high flame retardancy, durability and non-pilling properties make Xtreme an ever popular fabric for task seating.



## Technical information

### UK

**Industry Application**  
Contract

**Composition**  
100% post-consumer recycled polyester

**Environment**  
Certified to the EU Ecolabel  
Certified to OEKO-TEX® Standard 100  
Certified to Indoor Advantage™ Gold  
Made from 100% recycled polyester  
Non metallic dyestuffs

**Width**  
140 cm minimum

**Weight**  
310 g/m<sup>2</sup> ±5% (434 g/lin.m ±5%)

**Abrasion Resistance\***  
Heavy duty / 10 year guarantee  
Independently certified to ≥100,000 Martindale cycles

**Flammability**  
EN 1021 - 1 (cigarette)  
EN 1021 - 2 (match)  
BS 7176 Low Hazard  
BS 5852 Ignition Source 5  
BS 7176 Medium Hazard  
DIN 4102 B1  
NF D 60-013  
ONORM B 3825 & A 3800-1  
(over 58 kg/m<sup>3</sup> CMHR foam)  
UNI 9175 Classe 1 IM  
BS 476 Part 7 Class 1 (Adhered)  
*Note: Flammability performance is dependent on components used. Our certificates show what substrates have been used in our tests. For composite tests customers must ensure their complete furniture meets the necessary standards.*

**Light Fastness**  
6 (ISO 105 - B02)

**Fastness to Rubbing**  
Wet: 4, Dry: 4 (ISO 105 - X12)

**Bleach Cleanable**  
ISO 105 E03 colour change 4 for dilution factor 1:4 chlorine solution

**Cleaning**  
Vacuum regularly. Wipe with a damp cloth using a proprietary upholstery shampoo/ soap. For deeper cleaning use steam, bleach, alcohol or professionally dry clean. Can be washed at 60°C. Full details can be found in our cleaning and disinfection guide.

\*Abrasion testing produces a wide variability of results even from the same test sample. The independent certificate of ≥100,000 cycles is available on our website or from our customer service team. Internally we also specify this product at >100,000 cycles which we believe is realistic for repeatability of testing. Please be aware that abrasion testing alone is not a reliable indicator of the actual wear performance of fabrics. We're so confident in the durability of our products that we provide a robust 10 year guarantee (full details available). Please note that seam performance is dependent on seam construction and needle and thread type. We recommend that appropriate sewing advice be taken. Batch to batch variations in shade may occur within commercial tolerances. We reserve the right to alter technical specifications without notice. The Unregistered Design Rights and the Copyright in all designs are the exclusive property of Camira Fabrics Limited.

### D

**Einsatzbereich**  
Büro & Objekt

**Zusammensetzung**  
100% post-consumer recycelten Polyester

**Umweltfreundlich**  
Nach Zertifikat EU Ecolabel  
Nach Zertifikat OEKO-TEX® Standard 100  
Nach Zertifikat Indoor Advantage™ Gold  
Hergestellt aus 100% recycelten Polyester  
Nicht schwermetallhaltige Farbstoffe

**Breite**  
140 cm nutzbare Breite

**Gewicht**  
310 g/m<sup>2</sup> ±5% (434 g/lfd.m ±5%)

**Scheuerfestigkeit\***  
Schwerer Objekteinsetz / 10 Jahre Garantie  
Extern zertifiziert mit ≥100,000 Scheuertouren Martindale

**Feuersicherung**  
EN 1021 - 1 (Zigarettestest)  
EN 1021 - 2 (Streichholztest)  
BS 7176 Low Hazard  
BS 5852 Ignition Source 5  
BS 7176 Medium Hazard  
DIN 4102 B1  
NF D 60-013  
ONORM B 3825 & A 3800-1  
(mit 58 kg/m<sup>3</sup> CMHR Schaum)  
UNI 9175 Classe 1 IM  
BS 476 Part 7 Class 1 (Adhered)  
*Bemerkung: Die Schwerkentflammbarkeit hängt von den verwendeten Komponenten ab. Unsere Zertifikate zeigen auf, welche Substrate bei den Tests verwendet wurden. Bei Verbundtests muss sichergestellt sein, daß das komplette Möbel den entsprechenden Standards entspricht.*

**Lichtechtheit**  
6 (ISO 105 - B02)

**Reibechtheit**  
Nass: 4, Trocken: 4 (ISO 105 - X12)

**Chlorbleiche-Beständig**  
ISO 105 E03 Farbänderung 4 bei einer 1:4 verdünnten Chlor-Lösung

**Reinigung**  
Regelmässig absaugen. Mit einem feuchten Tuch abwischen oder mit einem geeigneten Polstershampoo behandeln. Für eine Grundreinigung bitte Dampf, Chlorbleiche, Alkohol oder professionelle Trockenreinigung verwenden. Kann bei 60°C gewaschen werden. Weitere Informationen finden Sie in unserem Leitfaden zur Reinigung und Desinfektion.

\*Die Scheuerfestigkeitsprüfung ergibt selbst bei gleichen Testmustern stark abweichende Ergebnisse. Das Zertifikat eines unabhängigen Prüfinstitutes über ≥100,000 Scheuertouren erhalten Sie von unserem Vertriebsinnendienst oder auf unserer Webseite. Intern spezifizieren wir auch dieses Produkt mit >100,000 Scheuertouren, die in der Serienfertigung als realistisch angenommen werden. Bitte nehmen Sie zur Kenntnis, dass die Scheuerfestigkeitsprüfung allein keine Aussagekraft über die Langlebigkeit eines Bezugsstoffes hat. Wir sind von der Langlebigkeit unserer Produkte überzeugt und bieten daher 10 Jahre Garantie (Details auf Anfrage). Eine optimale Nahtausreissfestigkeit hängt von der Nahtfahne, der verwendeten Nadel und dem Näh-Garn ab. Wir empfehlen daher Nähversuche durchzuführen. Handelsübliche Farbabweichungen können auftreten und berechtigen nicht zur Reklamation. Wir behalten uns die Änderung technischer Spezifikationen vor. Die registrierten und nicht registrierten Urheberrechte der Dessinierungen sind ausschliessliches Eigentum der Camira Fabrics Limited.

### F

**Application industrielle**  
Contract

**Composition**  
100% polyester recyclé post-consommation

**Écologique**  
Avec le certificat EU Ecolabel  
Certifié à OEKO-TEX® Standard 100  
Certifié à Indoor Advantage™ Gold  
Fabriqué d'un polyester 100% recyclé  
Teintures non métalliques

**Largeur**  
140 cm minimum

**Poids**  
310 g/m<sup>2</sup> ±5% (434 g/m.l ±5%)

**Résistance à l'abrasion\***  
Usage intense / garantie 10 ans.  
Certificat indépendant ≥100,000 cycles Martindale

**Flammabilité**  
EN 1021 - 1 (cigarette)  
EN 1021 - 2 (allumette)  
BS 7176 Low Hazard  
BS 5852 Ignition Source 5  
BS 7176 Medium Hazard  
DIN 4102 B1  
NF D 60-013  
ONORM B 3825 & A 3800-1  
(sur 58 kg/m<sup>3</sup> CMHR mousse)  
UNI 9175 Classe 1 IM  
BS 476 Part 7 Class 1 (Adhered)  
*Notez: La performance de flammabilité dépend des composantes utilisées. Nos certificats indiquent les substrats utilisés dans nos tests. Pour les tests composites, les clients doivent s'assurer que leurs meubles complets satisfont aux normes nécessaires.*

**Solidité à la lumière**  
6 (ISO 105 - B02)

**Solidité au Frottement**  
Mouillé: 4, Sec: 4 (ISO 105 - X12)

**Nettoyable au javel**  
ISO 105 E03 changement de couleur 4 pour le facteur de dilution 1: 4 solution de chlore

**Nettoyage**  
Passez l'aspirateur régulièrement. Essuyez avec un chiffon humide en utilisant un shampoing/savon pour tissus d'ameublement exclusif. Pour un nettoyage en profondeur, utilisez la vapeur, javel, alcool ou un nettoyage à sec professionnel. Peut être lavé à la machine, programme maximum 60°C. Vous trouverez tous les détails dans notre guide de nettoyage et de désinfection.

\*Les tests de résistance à l'abrasion proposent une large variété de résultat final, parfois sur le même échantillon de tissu. Le certificat indépendant de ≥100,000 cycles est disponible sur notre site internet; vous pouvez également contacter notre Service Clients. Nous validons également – en interne – à >100,000 cycles; ce qui est, d'après nous, plus réaliste dans le but d'obtenir une continuité égale des résultats de tests. Merci de noter que l'abrasion seule ne constitue pas un indicateur de confiance dans la performance du tissu à long terme. Nous avons une confiance absolue en nos produits et leur durabilité, c'est pour cela que nous vous offrons une garantie robuste de 10 ans. Veuillez noter que la performance du joint dépend de sa construction ainsi que de l'aiguille et du type de fil utilisés. Une variation de couleurs peut provenir (commerciallement tolérable). Nous réservons le droit de changer les spécifications techniques sans préavis. Les Droits de Conception non-enregistrés et les droits d'auteur de tous les motifs sont la propriétés exclusives de Camira Fabrics Limited.

### ES

**Aplicación Industrial**  
Contract

**Composición**  
Polyester reciclado 100% post consumido

**Ambiental**  
Certificado con EU Ecolabel  
Certificado de OEKO-TEX® Standard 100  
Certificado de Indoor Advantage™ Gold  
Hecho de 100% de poliéster reciclado  
Tintes no metálicos

**Ancho**  
140 cm mínimo

**Peso**  
310 g/m<sup>2</sup> ±5% (434 g/lin.m ±5%)

**Resistencia a la abrasión\***  
Garantía de 10 años con uso intenso independientemente del certificado de ≥100,000 Ciclos Martindale

**Inflamabilidad**  
EN 1021 - 1 (cigarillo)  
EN 1021 - 2 (cerilla)  
BS 7176 Low Hazard  
BS 5852 Ignition Source 5  
BS 7176 Medium Hazard  
DIN 4102 B1  
NF D 60-013  
ONORM B 3825 & A 3800-1  
(con CMHR 58 kg/m<sup>3</sup> de espuma)  
UNI 9175 Classe 1 IM  
BS 476 Part 7 Class 1 (Adhered)  
*Nota: El rendimiento de la inflamabilidad depende de los componentes usados. Nuestros certificados muestran qué substratos se han usado en nuestros tests. Para tests compuestos nuestros clientes deben asegurar si sus muebles cumplen la normativa al uso.*

**Solidez a la luz**  
6 (ISO 105 - B02)

**Solidez al rozamiento**  
Húmedo: 4, Seco: 4 (ISO 105 - X12)

**Possibilidad lavado con Lejía**  
ISO 105 E03 cambio color 4 para un factor de disolución 1:4 solución cloro

**Limpieza**  
Uso aspirador regularmente. Limpiar con un trapo usando jabón y agua o producto limpieza para tapicerías. Para una limpieza más profunda usen vapor, lejía, alcohol o limpieza en seco. Se puede lavar a 60°C. Los detalles completos se encuentran en nuestra guía de limpieza y desinfección.

\*Los Test de Abrasión producen unos resultados muy variables incluso con la misma muestra. El certificado de ≥100,000 ciclos Martindale está disponible en nuestra web o se puede pedir al Departamento Comercial. Internamente también certificamos este producto >100,000 ciclos, que pensamos que es lo más realista posible en este caso, con una repetición de resultados tan dispares. Tengan en cuenta que el Test de Abrasión solo no es un indicador fiable sobre el desgaste de un tejido. De hecho, estamos tan convencidos en la durabilidad de nuestros tejidos, que ofrecemos una garantía de 10 años (detalles completos disponibles). Tenga en cuenta que el rendimiento de la costura depende de la construcción de la costura, además de la aguja y del tipo de rosca. Le recomendamos que se aconsejen para coser la costura. Las variaciones de lote a lote en la sombra se puede producir dentro de tolerancias comerciales. Nos reservamos el derecho a efectuar modificaciones técnicas sin previo aviso. Los derechos sobre los diseños no registrados y los derechos de autor en todos los diseños son propiedad exclusiva de Camira Fabrics Limited.

# Oceanic Select Step Synergy

# Oceanic

## camira

### Standard Collection

profim

#### Oceanic

grupa  
cenowa 3

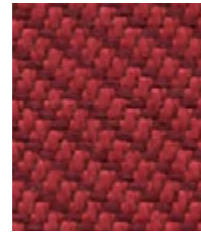
OOC01	OOC11
OOC04	OOC12
OOC06	OOC13
OOC08	OOC16

### Extended Collection

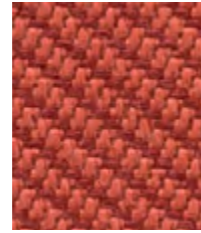
Wszystkie kolory poza standardowymi dostępne są z terminem realizacji 6-8 tygodni. Szczegóły wyceny dostępne są u właściwego RDS (Regionalnego Dyrektora Sprzedaży).



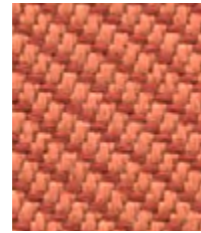
Photographic fabric scans are not colour accurate. Always request actual fabric samples before ordering.



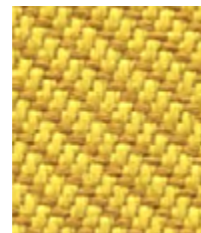
**Abyss**  
OOC10



**Aquatic**  
OOC12



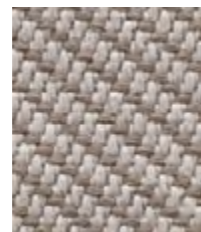
**Coral**  
OOC05



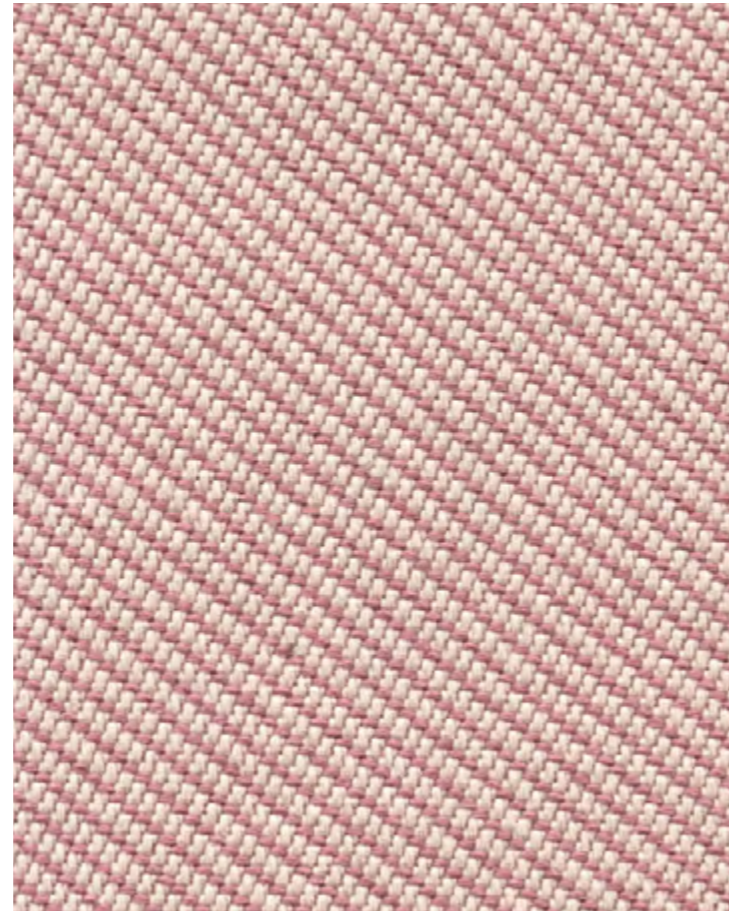
**Barrier**  
OOC07



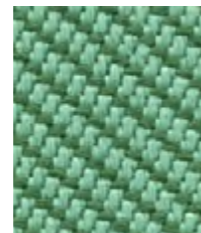
**Paddle**  
OOC13



**Riptide**  
OOC14



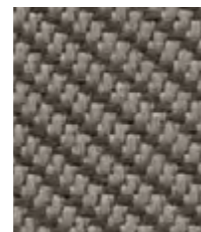
**Seafarer**  
OOC16



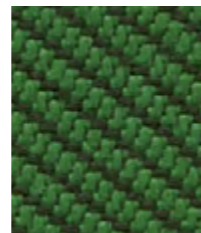
**Sea**  
OOC04



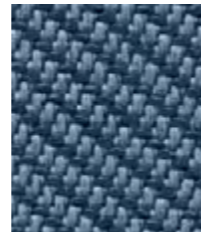
**Gulf**  
OOC15



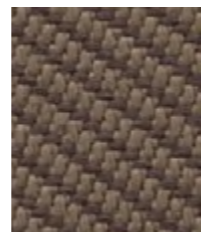
**Bay**  
OOC08



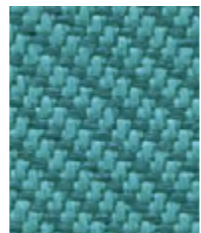
**Coast**  
OOC03



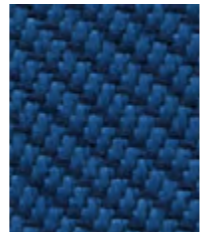
**Neptune**  
OOC11



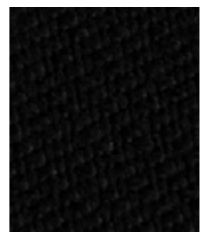
**Shore**  
OOC09



**Jetsam**  
OOC02



**Atoll**  
OOC06



**Flotsam**  
OOC01

## Oceanic - Product information



Task seating



Soft seating



Cigarette & Match



Environmental



Washable



Bleach cleanable



Year guarantee

With Treatment



Medium Hazard

Oceanic is a fabric born of the SEAQUAL INITIATIVE to combat marine plastic pollution and achieve a waste free environment. It is created entirely from post-consumer recycled plastic - from debris floating discarded in our seas, used to make SEAQUAL YARN®, to bottles thrown away and destined for landfill. One small drop in the mission to clean both the earth and its ocean, this contemporary fabric is a polyester with a purpose.

We actively encourage our furniture customers to sign up to the SEAQUAL INITIATIVE when selling furniture upholstered in Oceanic.

Find out more at <https://licensees.seaqual.org>



SEAQUAL

## Technical information

### UK

**Industry Application**  
Contract

**Composition**  
100% post-consumer recycled polyester, including 50% SEAQUAL yarn.

**Environment**  
Certified to the EU Ecolabel  
Certified to OEKO-TEX® Standard 100  
Certified to Indoor Advantage™ Gold  
Made from 100% post-consumer recycled polyester  
Non metallic dyestuffs

**Width**  
140 cm minimum

**Weight**  
497g/m<sup>2</sup> ±5% (696g/lin.m ±5%)

**Abrasion Resistance\***  
Heavy duty / 10 year guarantee  
Independently certified to ≥100,000 Martindale cycles

**Flammability**  
EN 1021 - 1 (cigarette)  
EN 1021 - 2 (match)  
BS 7176 Low Hazard  
**Optional: Please specify when ordering:**  
BS 5852 Ignition Source 5 with EnviroFlam5  
BS 7176 Medium Hazard with EnviroFlam5  
*Note: Flammability performance is dependent on components used. Our certificates show what substrates have been used in our tests. For composite tests customers must ensure their complete furniture meets the necessary standards.*

**Light Fastness**  
5 (ISO 105 - B02)  
OOC16: 4/5 (ISO 105 - B02)

**Fastness to Rubbing**  
Wet: 4, Dry: 4 (ISO 105 - X12)

**Bleach Cleanable**  
ISO 105 E03 colour change 4 for dilution factor 1:4 chlorine solution

**Cleaning**  
Vacuum regularly. Wipe with a damp cloth using a proprietary upholstery shampoo/ soap. For deeper cleaning use steam, bleach, alcohol or professionally dry clean. Can be washed at 60°C. Full details can be found in our cleaning and disinfection guide.

\*Abrasion testing produces a wide variability of results even from the same test sample. The independent certificate of ≥100,000 cycles is available on our website or from our customer service team. Internally we specify this product at >80,000 cycles which we believe is realistic for repeatability of testing. Please be aware that abrasion testing alone is not a reliable indicator of the actual wear performance of fabrics. We're so confident in the durability of our products that we provide a robust 10 year guarantee (full details available). Please note that seam performance is dependent on seam construction and needle and thread type. We recommend that appropriate sewing advice be taken.  
Batch to batch variations in shade may occur within commercial tolerances. We reserve the right to alter technical specifications without notice. The Unregistered Design Rights and the Copyright in all of our designs are the exclusive property of Camira Fabrics Limited.

### D

**Einsatzbereich**  
Büro & Objekt

**Zusammensetzung**  
100% recyceltes post-consumer Polyester, enthält 50% SEAQUAL Garn.

**Umweltfreundlich**  
Nach Zertifikat EU Ecolabel  
Nach Zertifikat OEKO-TEX® Standard 100  
Nach Zertifikat Indoor Advantage™ Gold  
Hergestellt aus 100% post-consumer recyceltes Polyester  
Nicht schwermetallhaltige Farbstoffe

**Breite**  
140 cm nutzbare Breite

**Gewicht**  
497g/m<sup>2</sup> ±5% (696g/ld.m ±5%)

**Scheuerfestigkeit\***  
Schwerer Objekteinsatz / 10 Jahre Garantie  
Extern zertifiziert mit ≥100,000 Scheuertouren Martindale

**Feuersicherung**  
EN 1021 - 1 (Zigarettentest)  
EN 1021 - 2 (Streichholztest)  
BS 7176 Low Hazard  
**Bitte bei Auftragserteilung angeben:**  
BS 5852 Ignition Source 5 mit EnviroFlam5  
BS 7176 Medium Hazard mit EnviroFlam5  
*Bemerkung: Die Schwerentflammbarkeit hängt von den verwendeten Komponenten ab. Unsere Zertifikate zeigen auf, welche Substrate bei den Tests verwendet wurden. Bei Verbundtests muss sichergestellt sein, daß das komplette Möbel den entsprechenden Standards entspricht.*

**Lichtechtheit**  
5 (ISO 105 - B02)  
OOC16: 4/5 (ISO 105 - B02)

**Reibechtheit**  
Wet: 4, Trocken: 4 (ISO 105 - X12)

**Chlorbleiche-Beständig**  
ISO 105 E03 Farbänderung 4 bei einer 1:4 verdünnten Chlor-Lösung

**Reinigung**  
Regelmässig absaugen. Mit einem feuchten Tuch abwischen oder mit einem geeigneten Polstershampoo behandeln. Für eine Grundreinigung bitte Dampf, Chlorbleiche, Alkohol oder professionelle Trockenreinigung verwenden. Kann bei 60°C gewaschen werden. Weitere Informationen finden Sie in unserem Leitfaden zur Reinigung und Desinfektion.

\*Die Scheuerfestigkeitsprüfung ergibt selbst bei gleichen Testmustern stark abweichende Ergebnisse. Das Zertifikat eines unabhängigen Prüfinstitutes über ≥100,000 Scheuertouren erhalten Sie von unserem Vertriebsinnendienst oder auf unserer Webseite. Intern spezifizieren wir dieses Produkt mit >80,000 Scheuertouren, die in der Serienfertigung als realistisch angemessen werden. Bitte nehmen Sie zur Kenntnis, dass die Scheuerfestigkeitsprüfung allein keine Aussagekraft über die Langlebigkeit eines Bezugstoffes hat. Wir sind von der Langlebigkeit unserer Produkte überzeugt und bieten daher 10 Jahre Garantie ( Details auf Anfrage). Eine optimale Nahtausreissfestigkeit hängt von der Nahtführung, der verwendeten Nadel und dem Näh-Garn ab. Wir empfehlen daher Nähversuche durchzuführen. Handelsübliche Farbabweichungen können auftreten und berechtigen nicht zur Reklamation. Wir behalten uns die Änderung technischer Spezifikationen vor. Die registrierten und nicht registrierten Urheberrechte der Dessinierungen sind ausschliessliches Eigentum der Camira Fabrics Limited.

### F

**Application Industrielle**  
Contract

**Composition**  
100% polyester recyclé post consommation, comprenant 50% de fil SEAQUAL.

**Écologique**  
Avec le certificat EU Ecolabel  
Certifié à OEKO-TEX® Standard 100  
Certifié à Indoor Advantage™ Gold  
Fabriqué en polyester recyclé à 100% après consommation  
Teintures non métalliques

**Largeur**  
140 cm minimum

**Poids**  
497g/m<sup>2</sup> ±5% (696g/m.l ±5%)

**Résistance à l'abrasion\***  
Usage intense / garantie 10 ans. Certificat indépendant ≥100,000 cycles Martindale

**Flammabilité**  
EN 1021 - 1 (cigarette)  
EN 1021 - 2 (allumette)  
BS 7176 Low Hazard  
**Prière de le mentionner lors de la commande:**  
BS 5852 Ignition Source 5 avec EnviroFlam5  
BS 7176 Medium Hazard avec EnviroFlam5  
*Note: La performance de flammabilité dépend des composantes utilisées. Nos certificats indiquent les substrats utilisés dans nos tests. Pour les tests composites, les clients doivent s'assurer que leurs meubles complets satisfont aux normes nécessaires.*

**Solidité à la lumière**  
5 (ISO 105 - B02)  
OOC16: 4/5 (ISO 105 - B02)

**Solidité au Frottement**  
Mouillé: 4, Sec: 4 (ISO 105 - X12)

**Nettoyable au javel**  
ISO 105 E03 changement de couleur 4 pour le facteur de dilution 1: 4 solution de chlore

**Nettoyage**  
Passez l'aspirateur régulièrement. Essuyez avec un chiffon humide en utilisant un shampoing / savon pour tissus d'ameublement exclusif. Pour un nettoyage en profondeur, utilisez la vapeur, javel, alcool ou un nettoyage à sec professionnel. Peut être lavé à la machine, programme maximum 60°C. Vous trouverez tous les détails dans notre guide de nettoyage et de désinfection.

\*Les tests de résistance à l'abrasion proposent une large variété de résultat final, parfois sur le même échantillon de tissu. Le certificat indépendant de ≥100,000 cycles est disponible sur notre site internet; vous pouvez également contacter notre Service Clients. Nous validons ce produit – en interne – à >80,000 cycles; ce qui est, d'après nous, plus réaliste dans le but d'obtenir une continuité égale des résultats de tests. Merci de noter que l'abrasion seule ne constitue pas un indicateur de confiance dans la performance du tissu à long terme. Nous avons une confiance absolue en nos produits et leur durabilité, c'est pour cela que nous vous offrons une garantie robuste de 10 ans. Veuillez noter que la performance du joint dépend de sa construction ainsi que de l'aiguille et du type de fil utilisés. Une variation de couleurs peut provenir (commerciallement tolérable). Nous réservons le droit de changer les spécifications techniques sans préavis. Les Droits de Conception non-enregistrés et les droits d'auteur de tous les motifs sont la propriété exclusive de Camira Fabrics Limited.

### ES

**Aplicación Industrial**  
Contract

**Composición**  
100% polyester reciclado post consume, compuesto de un 50% de hilo SEAQUAL.

**Ambiental**  
Certificado con EU Ecolabel  
Certificado de OEKO-TEX® Standard 100  
Certificado de Indoor Advantage™ Gold  
Producido con poliéster reciclado a 100% tras ser consumido  
Tintes no metálicos

**Ancho**  
140 cm mínimo

**Peso**  
497g/m<sup>2</sup> ±5% (696g/lin.m ±5%)

**Resistencia a la abrasión\***  
Garantía de 10 años con uso intenso independientemente del certificado de ≥100,000 Ciclos Martindale

**Inflamabilidad**  
EN 1021 - 1 (cigarillo)  
EN 1021 - 2 (cerilla)  
BS 7176 Low Hazard  
**Por favor especificar cuando se requiere en el pedido:**  
BS 5852 Ignition Source 5 con EnviroFlam5  
BS 7176 Medium Hazard con EnviroFlam5  
*Nota: El rendimiento de la inflamabilidad depende de los componentes usados. Nuestros certificados muestran qué substratos se han usado en nuestros tests. Para tests compuestos nuestros clientes deben asegurar si sus muebles cumplen la normativa al uso.*

**Solidez a la luz**  
5 (ISO 105 - B02)  
OOC16: 4/5 (ISO 105 - B02)

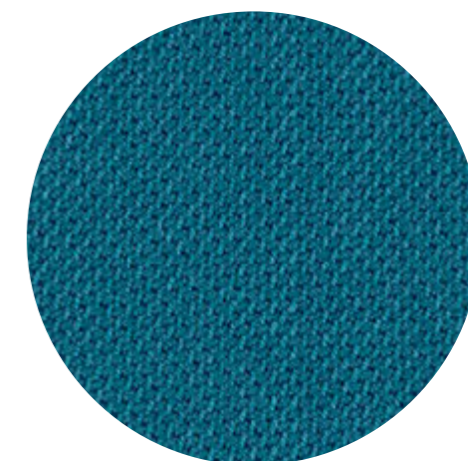
**Solidez al rozamiento**  
Húmedo: 4, Seco: 4 (ISO 105 - X12)

**Posibilidad lavado con Lejía**  
ISO 105 E03 cambio color 4 para un factor de disolución 1:4 solución cloro

**Limpieza**  
Uso aspirador regularmente. Limpiar con un trapo usando jabón y agua o producto limpieza para tapicerías. Para una limpieza más profunda usen vapor, lejía, alcohol o limpieza en seco. Se puede lavar a 60°C. Los detalles completos se encuentran en nuestra guía de limpieza y desinfección.

\*Los Test de Abrasión producen unos resultados muy variables incluso con la misma muestra. El certificado de ≥100,000 ciclos Martindale está disponible en nuestra web o se puede pedir al Departamento Comercial. Internamente certificamos este producto >80,000 ciclos, que pensamos que es lo más realista posible en este caso, con una repetición de resultados tan dispares. Tengan en cuenta que el Test de Abrasión solo no es un indicador fiable sobre el desgaste de un tejido. De hecho, estamos tan convencidos en la durabilidad de nuestros tejidos, que ofrecemos una garantía de 10 años (detalles completos disponibles). Tenga en cuenta que el rendimiento de la costura depende de la construcción de la costura, además de la aguja y del tipo de roscas. Le recomendamos que se aconsejen para coser la costura. Las variaciones de lote a lote en la sombra se puede producir dentro de tolerancias comerciales. Nos reservamos el derecho a efectuar modificaciones técnicas sin previo aviso. Los derechos sobre los diseños no registrados y los derechos de autor en todos los diseños son propiedad exclusiva de Camira Fabrics Limited.

profim



## SELECT™

by Gabriel

### Standard Collection

profim

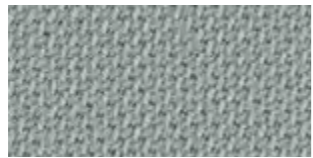
#### Select

grupa cenowa 3

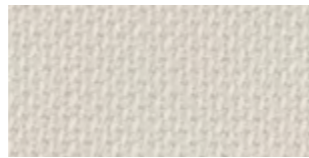
60132	65117
60999	67097
61186	67098
62097	68210

### Extended Collection

Wszystkie kolory poza standardowymi dostępne są z terminem realizacji 6-8 tygodni. Szczegóły wyceny dostępne są u właściwego RDS (Regionalnego Dyrektora Sprzedaży).



60131



60005



62097



60139



61188



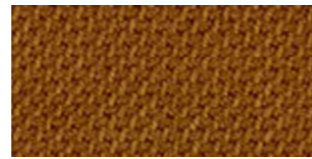
62098



60003



60129



62100



60134



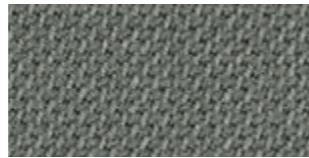
60130



61184



60051



60132



61189



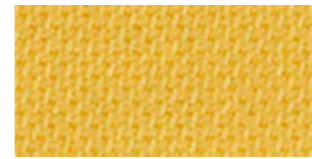
60999



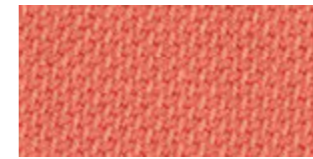
60133



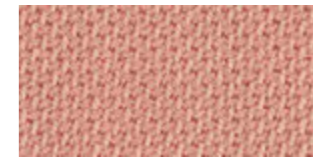
61187



62103



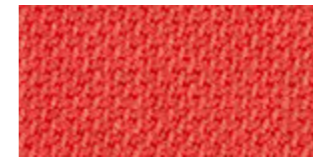
64214



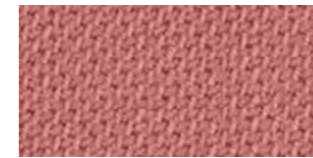
64213



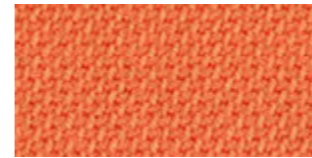
62099



64215



65117



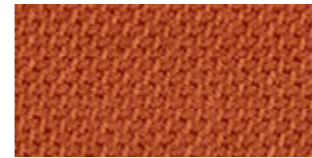
63101



64216



61185



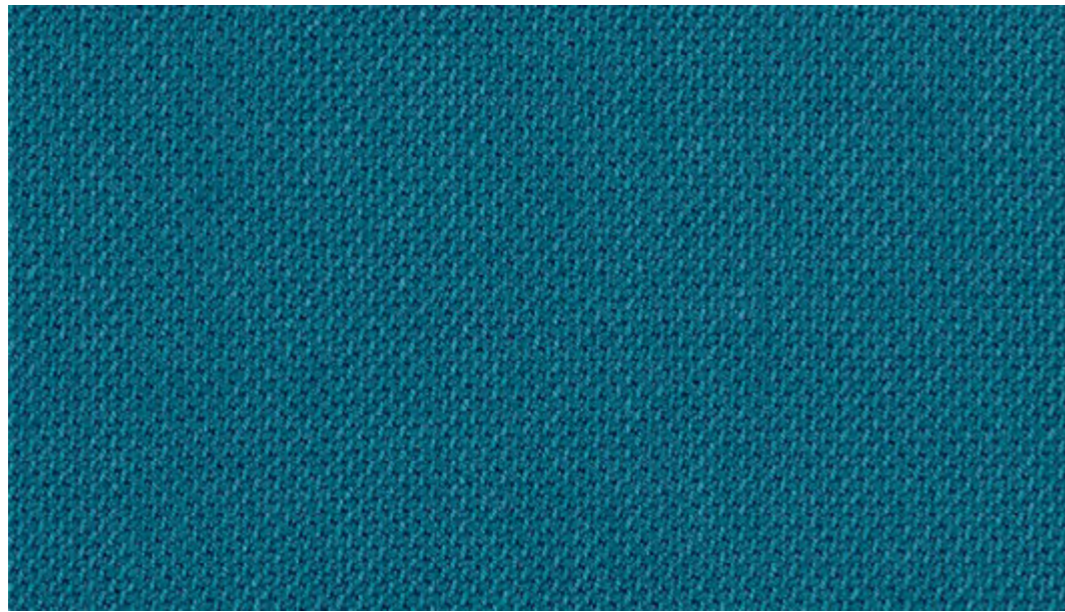
63102



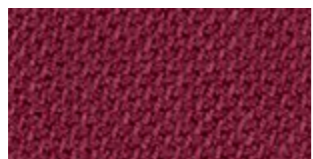
64089



61186



66192



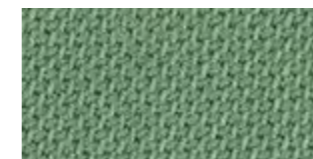
65114



67098



67101



68210



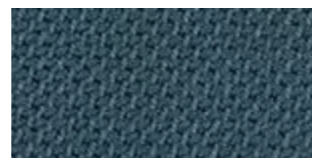
62104



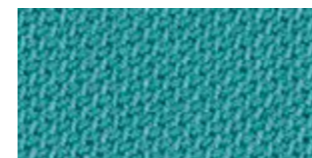
61190



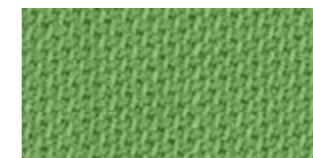
66190



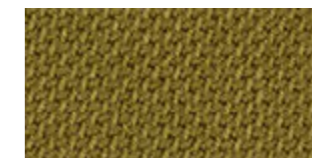
67097



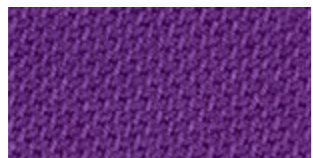
67100



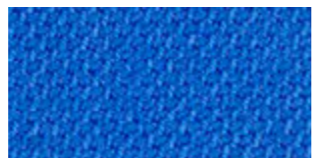
67094



67093



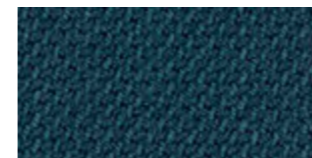
65116



66189



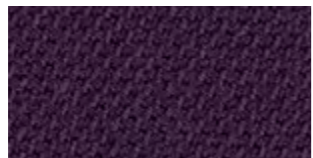
66191



66193



68211



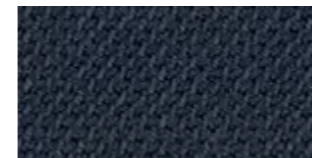
65077



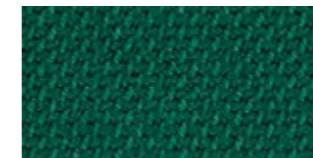
66075



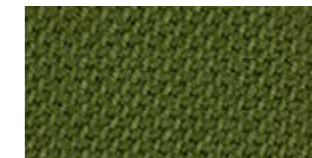
66192



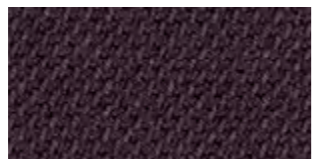
66194



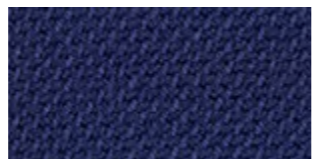
67096



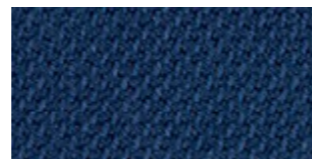
67095



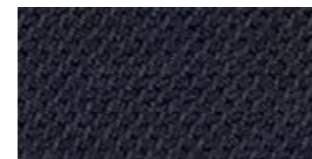
65115



66005



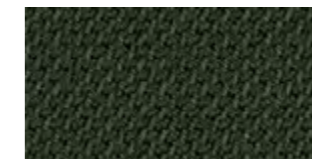
66071



66144



67099



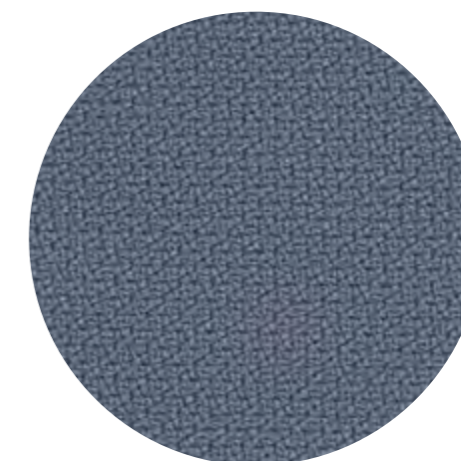
68209

# SELECT™

---

Select specifications: [www.gabriel.dk](http://www.gabriel.dk)

Please be aware that the PDF colour shades can appear different from the real fabric colours.  
We advise you to request actual fabric samples before ordering.



# STEP™

---

by Gabriel

## Standard Collection

profim

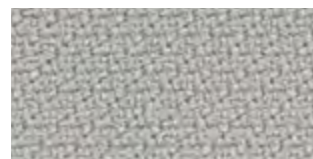
### Step

grupa cenowa 3

60090	63075
60091	66152
60999	67004
62057	68161

## Extended Collection

Wszystkie kolory poza standardowymi dostępne są z terminem realizacji 6-8 tygodni. Szczegóły wyceny dostępne są u właściwego RDS (Regionalnego Dyrektora Sprzedaży).



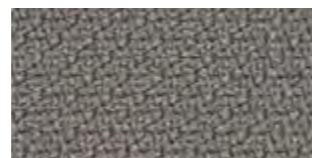
60004



60091



61149



60011



62057



60092



61103



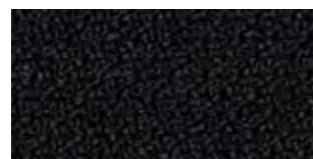
66019



60090



61150



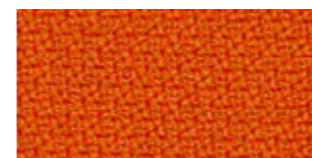
60999



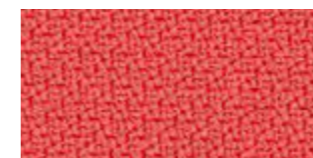
60089



60021



63082



64178



65092



63012



64180



65023



63075



64179



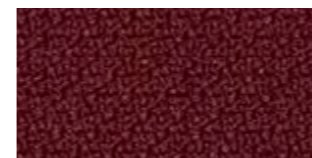
65047



64177



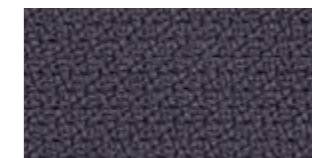
65093



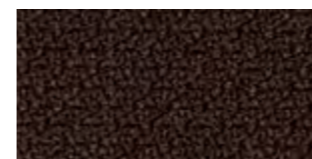
64159



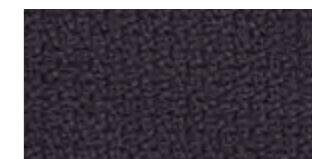
64013



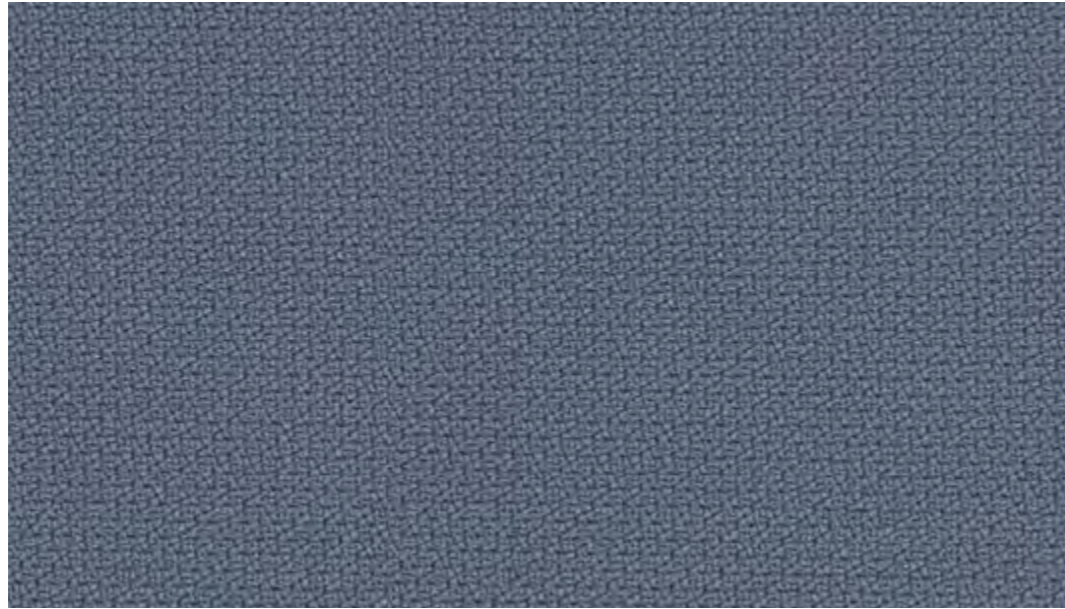
65094



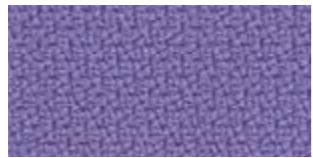
61102



65095



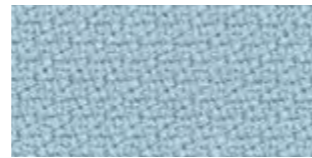
66152



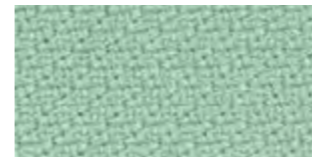
65090



66152



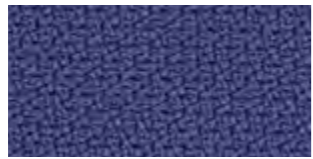
67004



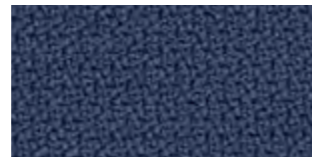
68118



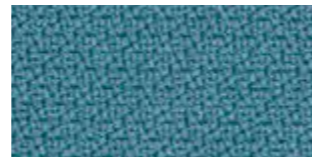
62073



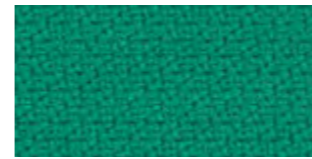
65091



66148



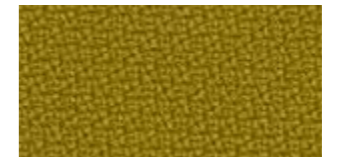
67072



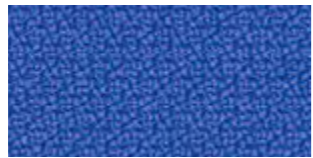
68157



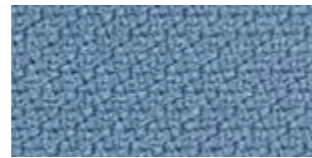
68163



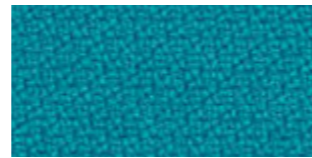
68164



66150



66018



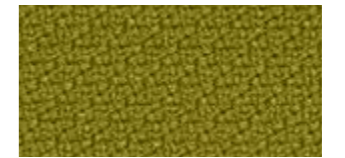
67073



68159



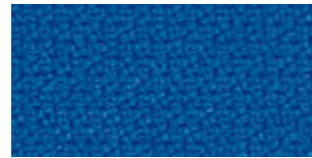
68162



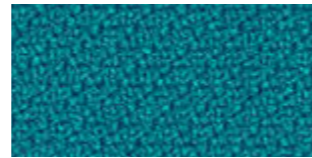
68119



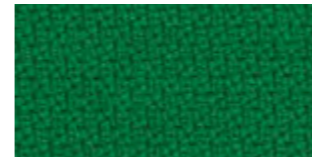
66149



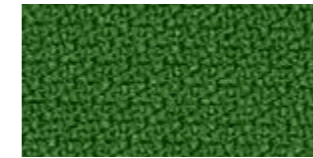
66151



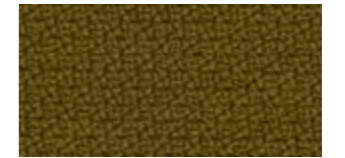
67007



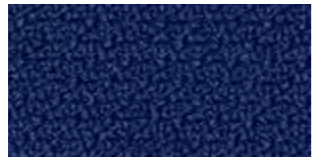
68160



68120



68165



65018



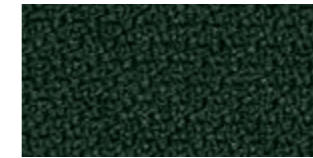
65011



68158



68161



68121

# STEP™

---

Step specifications: [www.gabriel.dk](http://www.gabriel.dk)

Please be aware that the PDF colour shades can appear different from the real fabric colours.  
We advise you to request actual fabric samples before ordering.

# Synergy

---

## camira

## Standard Collection

profim

### Synergy

grupa cenowa ③

LDS08	LDS56
LDS16	LDS62
LDS17	LDS73
LDS49	LDS74

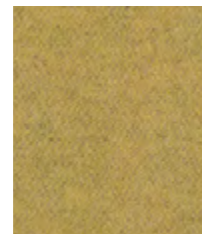
## Extended Collection

Wszystkie kolory poza standardowymi dostępne są z terminem realizacji 6-8 tygodni. Szczegóły wyceny dostępne są u właściwego RDS (Regionalnego Dyrektora Sprzedaży).





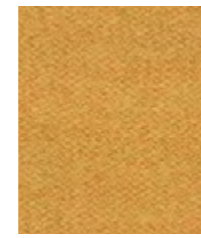
**Bracket**  
LDS23



**Summon**  
LDS45



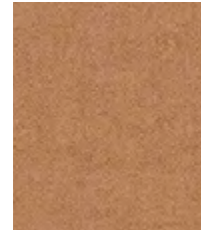
**Lateral**  
LDS28



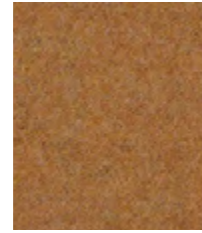
**Relate**  
LDS44



**Marry**  
LDS43



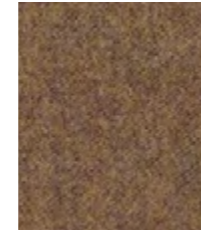
**Loop**  
LDS18



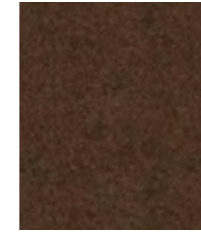
**Frame**  
LDS22



**Success**  
LDS76



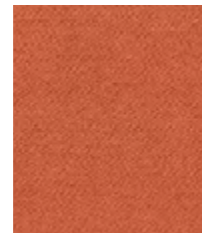
**Linea**  
LDS37



**Collective**  
LDS39



**Affinity**  
LDS74



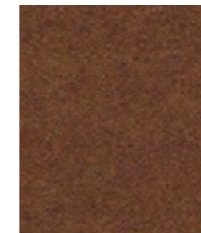
**Contribution**  
LDS75



**Work**  
LDS73



**Combo**  
LDS77



**Cordial**  
LDS78



**Congregate**  
LDS83



**Likeness**  
LDS82



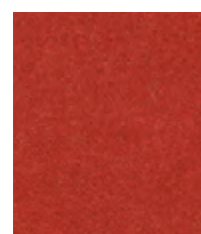
**Similar**  
LDS81



**Mutual**  
LDS84



**Global**  
LDS86



**Open**  
LDS71



**Apt**  
LDS80



**Share**  
LDS85



**Values**  
LDS87



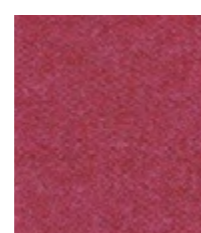
**Amiable**  
LDS79



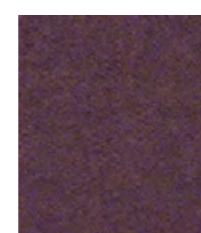
**Fate**  
LDS07



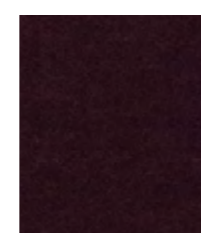
**Compose**  
LDS72



**Medley**  
LDS36



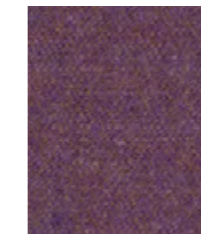
**Together**  
LDS70



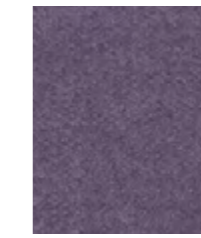
**Process**  
LDS88



**Venture**  
LDS05



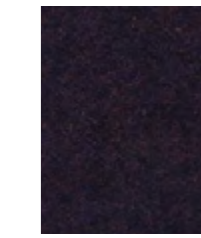
**Fellowship**  
LDS66



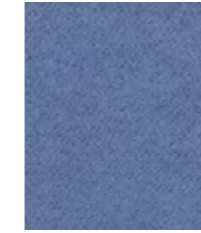
**Warmth**  
LDS67



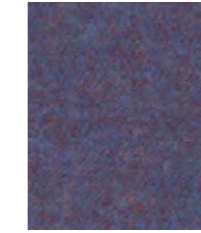
**Collaborate**  
LDS68



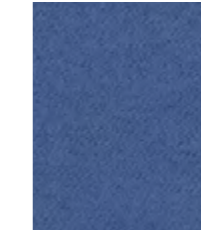
**Assemble**  
LDS61



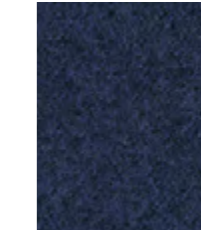
**Huddle**  
LDS65



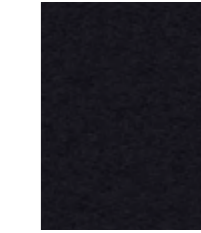
**Order**  
LDS64



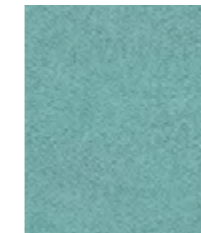
**Guild**  
LDS63



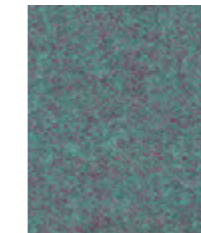
**Alike**  
LDS62



**Sync**  
LDS69



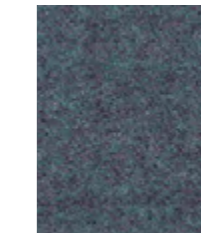
**Support**  
LDS55



**Kinship**  
LDS56



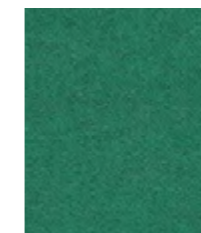
**Engage**  
LDS57



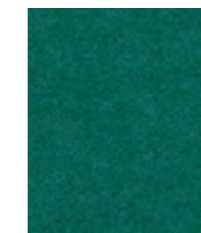
**Family**  
LDS58



**Unity**  
LDS38



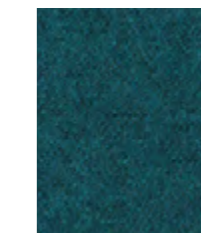
**Comply**  
LDS52



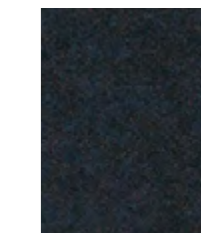
**Kindness**  
LDS51



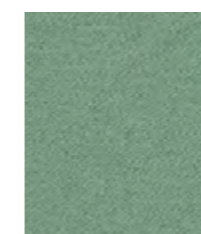
**League**  
LDS50



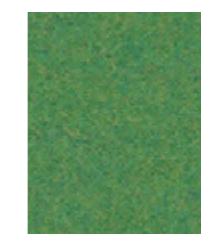
**Group**  
LDS59



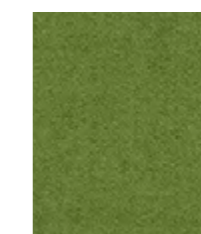
**Accord**  
LDS60



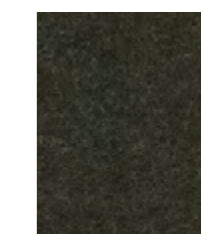
**Regard**  
LDS54



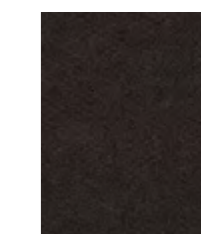
**Pact**  
LDS53



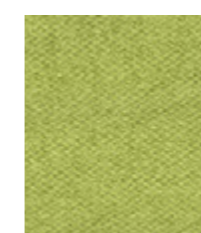
**Integrate**  
LDS47



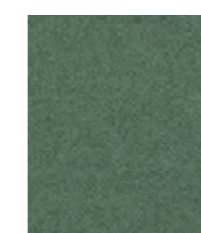
**Couple**  
LDS41



**Bridge**  
LDS26



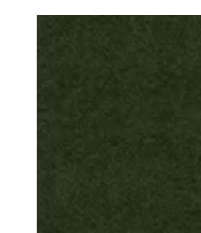
**Gather**  
LDS46



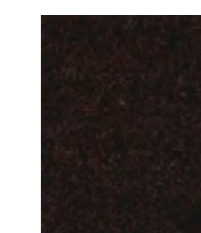
**Append**  
LDS49



**Interfuse**  
LDS48



**Intertwine**  
LDS42



**Co-operate**  
LDS40



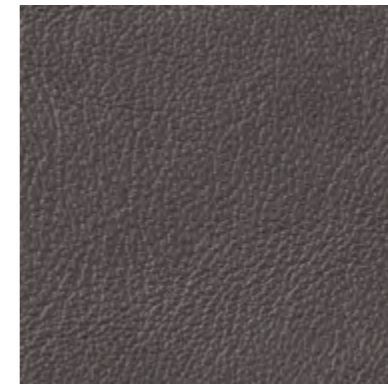
# Skóra Leather Leder

Standard  
Collection

④ Skóra  
Leather  
Leder



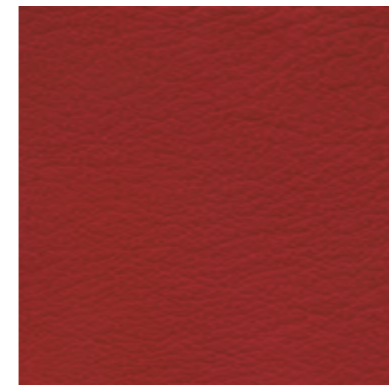
S-18



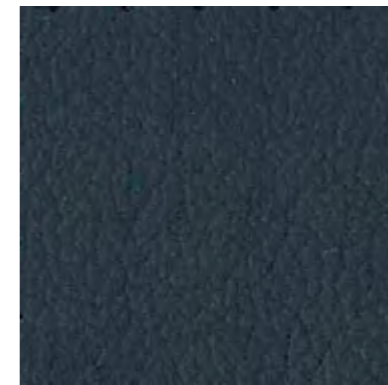
S-16



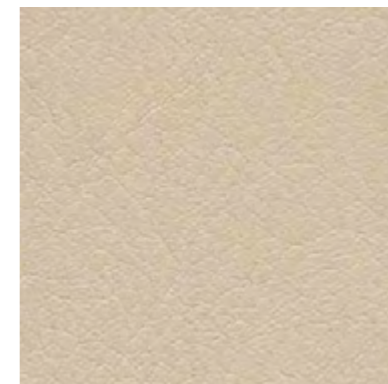
S-28



S-19



S-27



S-21



S-10

# Skóra<sup>4</sup> Leather Leder

## Extended Collection

# Skóra Leather Leder

# Premium



S-20



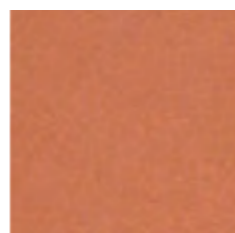
S-22



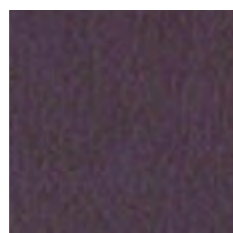
S-23



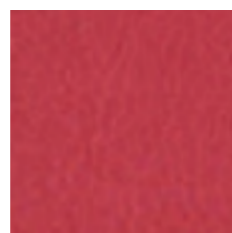
S-26



S-24



S-29



S-25

## PL

**Skład:**  
100% skóra

**Grubość:**  
0,8-1,0 mm (+/- 15%)

**Odporność barwy na tarcie (na sucho, na mokro):** 4-5 (PN-EN ISO 11640), **Trudnozapałność – papieros:** UNI EN 1021-1, **Trudnozapałność – zapalka:** UNI EN 1021-2, **Odporność na światło:** 5 (BS EN ISO 105-B02)

**Pielęgnacja:**  
Skóra jest surowcem naturalnym. Wszelkie zadrapania, blizny, ukłucia owadów, różnice w fakturze i odcieniach są naturalne i nie obniżają jej jakości. Konieczne konserwacji należy dokonać specjalnymi środkami do pielęgnacji skóry, które tworzą powłokę ochronną, odporną na wodę i substancje oleiste.

## EN

**Composition:**  
100% leather

**Thickness:**  
0.8-1.0 mm (+/- 15%)

**Colour fastness to rubbing (wet, dry):** 4-5 (PN-EN ISO 11640), **Flammability – cigarette:** UNI EN 1021-1, **Flammability – match:** UNI EN 1021-2, **Light fastness:** 5 (BS EN ISO 105-B02)

**Maintenance:**  
Leather is a natural material. All scratches, scars, insect pricks, differences in the texture and shades are natural and do not lower its quality. Proper maintenance should be performed with the use of special agents creating a protection layer, resistant against water and oil substances.

## DE

**Zusammensetzung:**  
100% Leder

**Dicke:**  
0,8-1,0 mm (+/- 15%)

**Reibechtheit (Nass, Trocken):** 4-5 (PN-EN ISO 11640), **Brandschutz – Zigarettentest:** UNI EN 1021-1, **Brandschutz – Streichholztest:** UNI EN 1021-2, **Lichtechtheit:** 5 (BS EN ISO 105-B02)

**Reinigung:**  
Das Leder ist ein Naturprodukt. Sowohl Risse, Narben, Insektstiche als auch Farbunterschieden sind natürlich und sind keine Qualitätsmängel, sondern Kennzeichen eines echten Naturprodukts. Zur Reinigung sollte man nur entsprechende Reinigungsmittel anwenden, die eine Schutzschicht gegen das Wasser und ölige Substanze bilden.

Przedstawione wzory wykończeń nie stanowią oferty w rozumieniu Kodeksu Cywilnego. W ramach stałego doskonalenia produktów firma zastrzega sobie prawo do wprowadzania zmian w ofercie.

The offer presented in the pattern book is not a valid legal offer. In policy of continuous product improvement our company reserves right to make changes at any time without prior notice.

Dieser Katalog ist kein Angebot im rechtlichen Sinn. Wir behalten uns Änderungen der Produkten im Sinne einer technischen Entwicklung oder Änderungen in Form und Farbe vor.

# Ascot

## BASIC

Standard Collection profim

Skóra Premium grupa cenowa 5

2180	2875
2760	2900
2840	
2845	

Extended Collection

Wszystkie kolory poza standardowymi dostępne są z terminem realizacji 6-8 tygodni. Szczegóły wyceny dostępne są u właściwego RDS (Regionalnego Dyrektora Sprzedaży).



**gmelich**leder

das Leder für Anspruchsvolle  
leading the way in leather

# Ascot



pumpkin 2420



oxblood 2430



cherry 2425



pumpkin 2420



cognac 2435



viola 2440



rubin 2360



salmon 2410



aubergine 2480



mohn 2340



orange 2415



brasil 2855



redbrown 2860



mocca 2880



black 2900



brandy 2850



cioccolata 2875



hazelnut 2845



caramel 2840



cocos 2160



pearl 2180



mirabelle 2260



ecru 2155



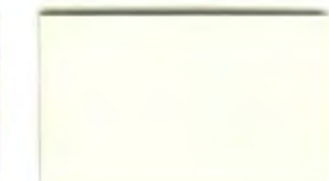
white 2100



almond 2150



sand 2140



offwhite 2110



blue 2580



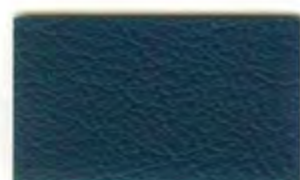
lupine 2530



heaven 2520



indigo 2560



royal 2540



agave 2620



grape 2535



kobalt 2550



amazonas 2660



violet 2390



mole 2780



jade 2680



granite 2760



rock 2750



olive 2640



lightgrey 2720



stone 2740



khaki 2630

Ascot		Leder Spezifikation	
Bezeichnung	Einheit	Anforderung	Prüfvorschrift
Lederdicke	mm	1,0 - 1,2	DIN EN ISO 2589 (DIN 53326)
Weiterreißkraft	N/mm	> 20	DIN EN ISO 3377-1 (DIN 53329)
Reibechtheit	Note	> 4	DIN EN ISO 11640
Haftung der Zurichtung	N/10mm	2	ISO 11644 / IUF 470
Lichtechtheit	Stufe Blauskala	5	DIN EN ISO 105 - B02
Knickungen		20.000	DIN EN ISO 5402 (DIN 53351)
Brandtest			DIN EN 1021 Part I + II

Ascot		Leather Specification	
Characteristic	Unit	Requirement	Test method
Thickness	mm	1,0 - 1,2	DIN EN ISO 2589 (DIN 53326)
Tear strength	N/mm	> 20	DIN EN ISO 3377-1 (DIN 53329)
Rubbing strength	Note	> 4	DIN EN ISO 11640
Adhesion of finish	N/10mm	2	ISO 11644 / IUF 470
Light fastness	class blue scale	5	DIN EN ISO 105 - B02
Flexing endurance		20,000	DIN EN ISO 5402 (DIN 53351)
Flame resistance			DIN EN 1021 Part I + II





**gmelich**leder

Lederfabrik  
Gmelich + Söhne GmbH  
Kreuzstraße 65, D-71723 Großbottwar  
Tel. +49 7148-9615-0, Fax +49 7148-9615-111  
e-Mail: info@gmelich.de, www.gmelich.de



### Gmelich + Söhne GmbH

Die Lederproduktion hat in Großbottwar lange Tradition. Im Jahre 1923 gründete der Kaufmann Otto Gmelich mit seinen Söhnen Hugo und Robert die Firma Gmelich + Söhne. Direkt nach der Gründung wurde mit dem Bau der ersten Fabrik begonnen.

Das Produktportfolio wechselte über die Jahre vom Schuhleder in immer stärkerem Maße in den Polstermöbel- und Büro- / Objektbereich. Aber auch Leder für die Bekleidung, Bücher, Trommeln und seit neuestem Leder für die Flugzeugindustrie finden international immer mehr Anklang und Liebhaber.

Heute zählt Gmelich mit rund 115 Mitarbeitern zu den ganz wenigen Gerbereien in Europa, die eine vollstufige Lederherstellung betreiben, also von der rohen Haut bis zum fertigen Leder alle Prozesse im eigenen Hause durchführen, und demnach auch den durchgängigen Einfluss auf die Qualität des fertigen Leders haben.

Die Firmenphilosophie, Leder in höchster Qualität umweltfreundlich herzustellen, sowie zielgerichtete Modernisierungen und Investitionen, sorgten dafür, dass Gmelich bei den renommiertesten Lederverarbeitern der Welt als Topadresse für Leder gilt.

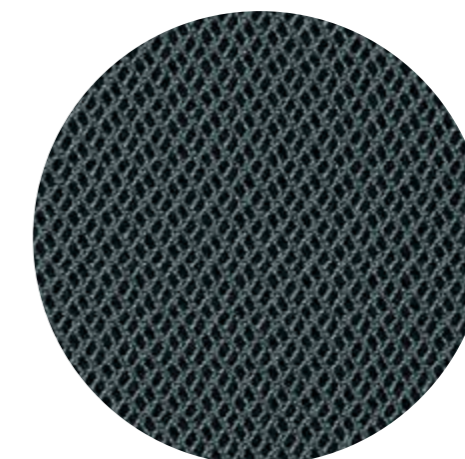
### Gmelich + Söhne GmbH

*Leather production in Großbottwar follows a long tradition. In 1923 the businessman Otto Gmelich and his sons Hugo and Robert founded the company Gmelich + Söhne, and directly afterwards began building their first factory.*

*Over the years their product range gradually changed from the production of shoe leather to a steady increase in the production of leather for the upholstery seating and for the office and contract markets. Leather for clothing, books, drums and more recently the aeroplane industry has also gained an international reputation and critical acclaim over the years.*

*Today Gmelich, with approximately 115 employees, is one of the few tanneries remaining in Europe to oversee the full production; each stage, from treating the raw hide to the production of the finished leather, is carried out in house, enabling the company to keep full control over the quality of the finished product.*

*The company philosophy, involving the production of high quality leather to environmental standards, along with targeted modernisation and investment, has ensured Gmelich a reputation as a first class source of leather amongst some of the most renowned leather users in the world.*



**RHYTHM™**

by Gabriel

Standard  
Collection

profim

Rhythm

Rhythm 60165    Rhythm 66152  
Rhythm 60176    Rhythm 68121  
Rhythm 60999  
Rhythm 63067

Extended  
Collection

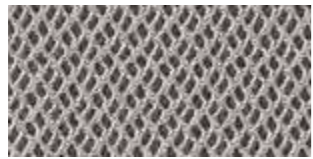
Wszystkie kolory poza standardowymi dostępne są z terminem realizacji 6-8 tygodni. Szczegóły wyceny dostępne są u właściwego RDS (Regionalnego Dyrektora Sprzedaży).



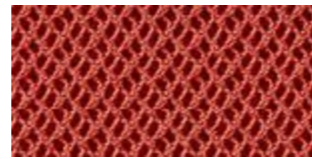
68122



60000



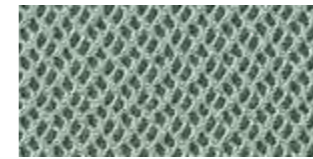
60165



63067



66151



68121



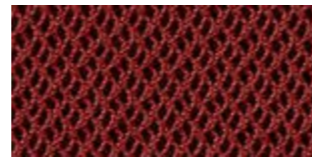
68123



60025



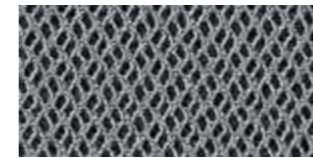
60176



63068



66152



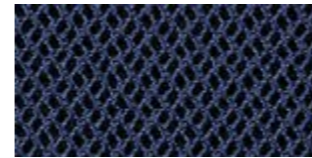
68120



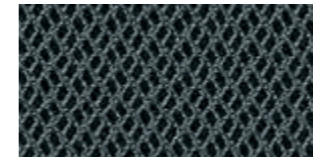
60999



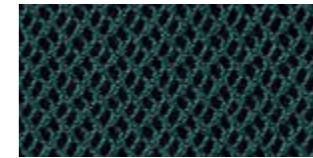
64089



66138



68122



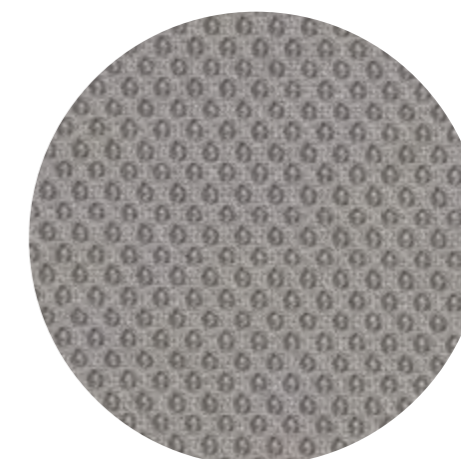
68124

# RHYTHM™

---

Rhythm specifications: [www.gabriel.dk](http://www.gabriel.dk)

Please be aware that the PDF colour shades can appear different from the real fabric colours.  
We advise you to request actual fabric samples before ordering.



# RUNNER™

---

by Gabriel

## Standard Collection

---

profim

### Runner

---

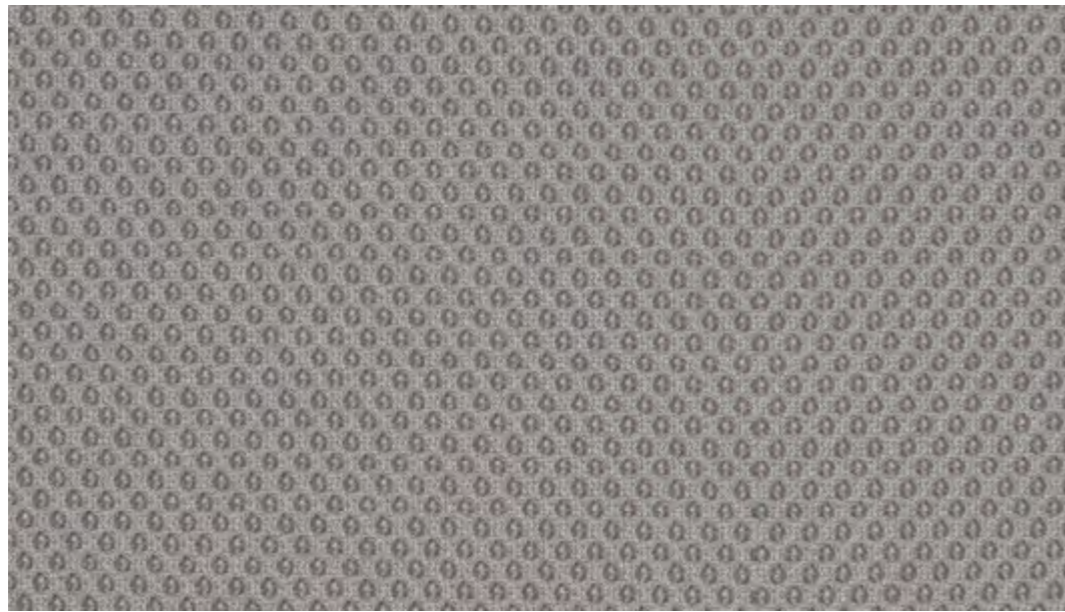
Runner 60011  
Runner 60061  
Runner 60999

## Extended Collection

---

Wszystkie kolory poza standardowymi dostępne są z terminem realizacji 6-8 tygodni. Szczegóły wyceny dostępne są u właściwego RDS (Regionalnego Dyrektora Sprzedaży).





60165



60061



61128



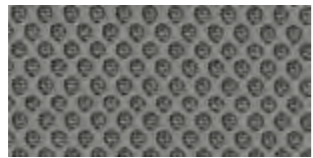
60165



61110



63034



60011



62064



64119



60025



64089



60999



61129



61130



65078



68137



66140



66063



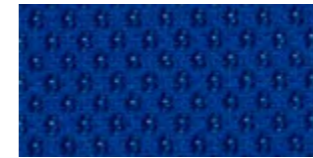
68108



68056



66123



66120



68109



66064



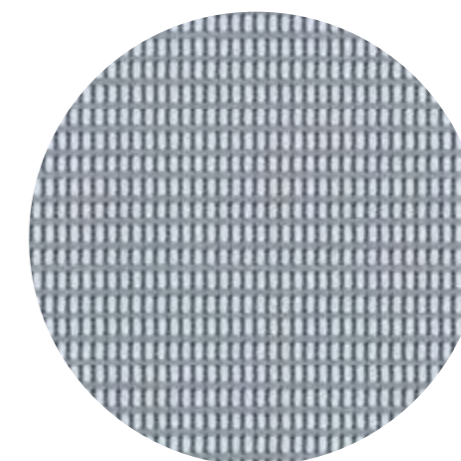
68110

# RUNNER™

---

Runner specifications: [www.gabriel.dk](http://www.gabriel.dk)

Please be aware that the PDF colour shades can appear different from the real fabric colours.  
We advise you to request actual fabric samples before ordering.



# STRING™

---

by Gabriel

Standard Collection profim

---

String

---

String 60118  
String 60999

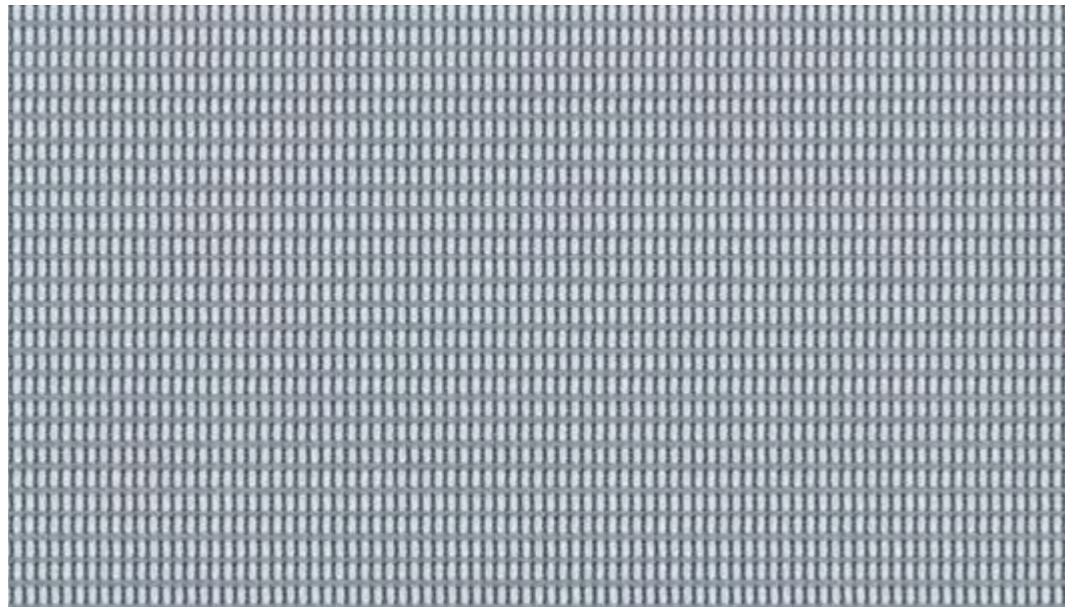
Extended Collection

---

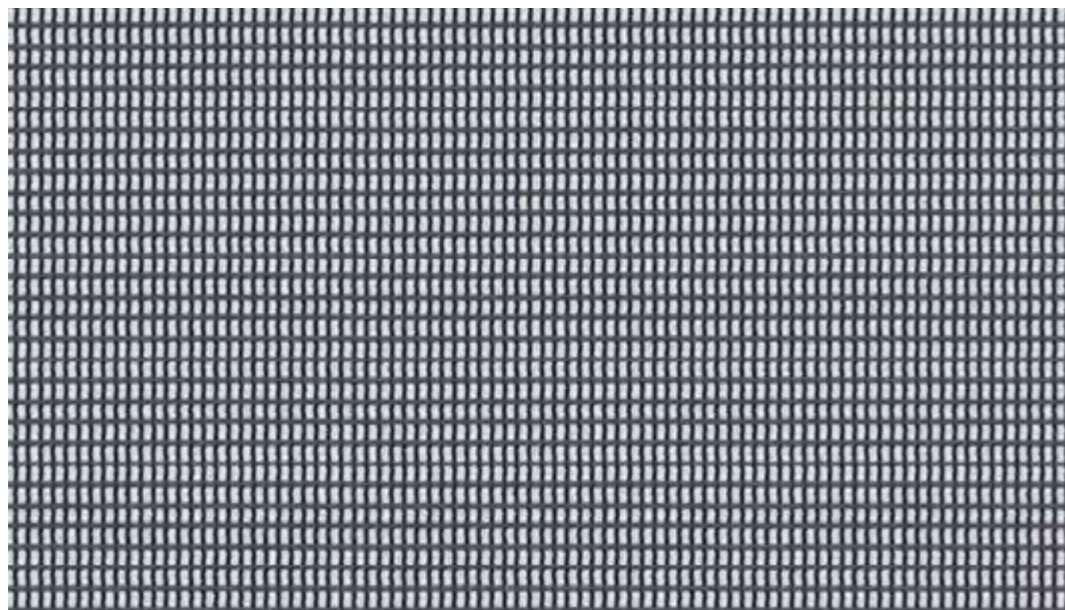
Wszystkie kolory poza standardowymi dostępne są z terminem realizacji 6-8 tygodni. Szczegóły wyceny dostępne są u właściwego RDS (Regionalnego Dyrektora Sprzedaży).



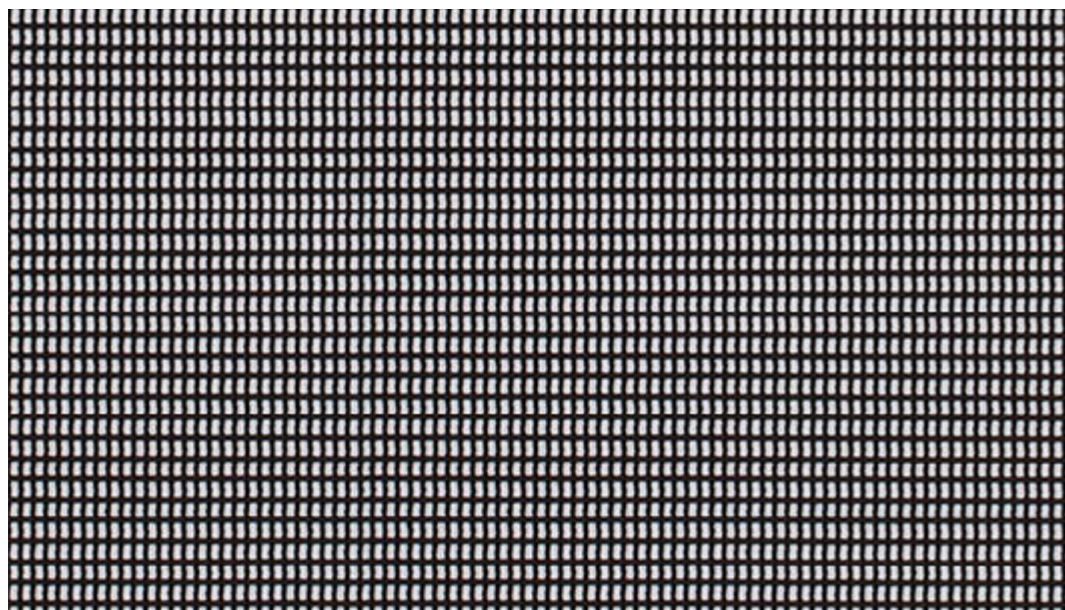
**Gabriel®**



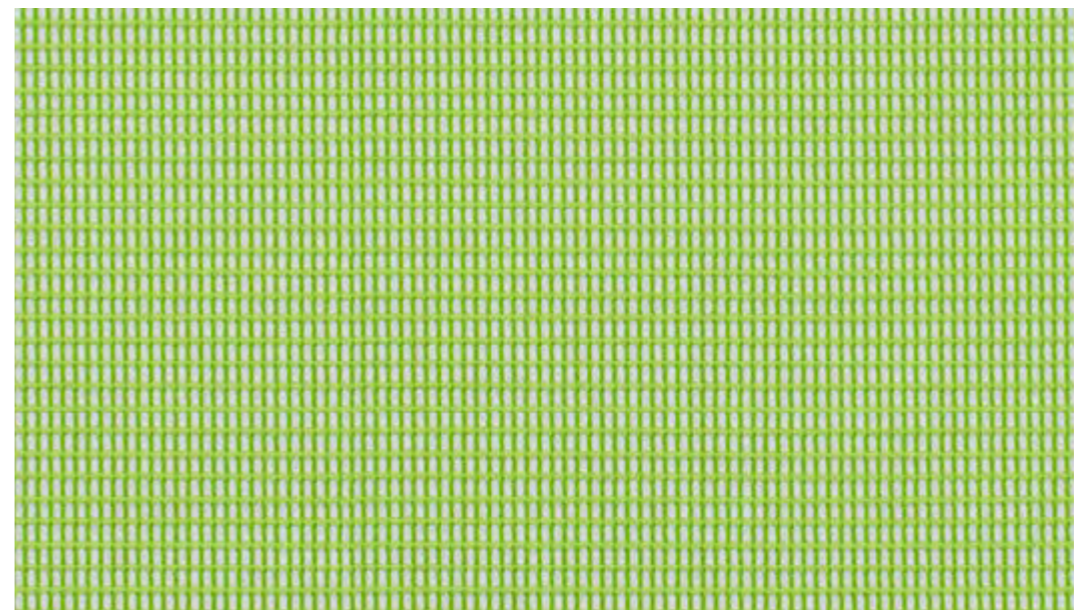
60119



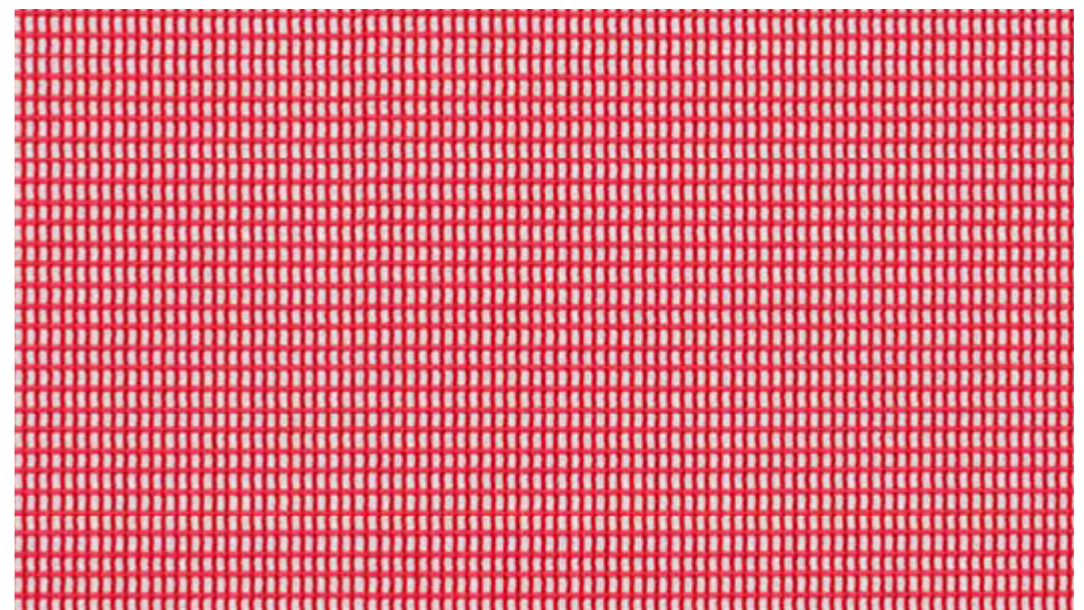
60118



60999



68092



64079

**STRING™**

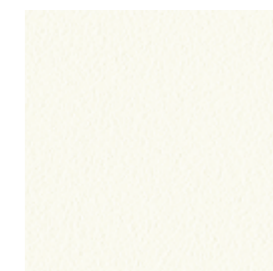
---

String specifications: [www.gabriel.dk](http://www.gabriel.dk)

Please be aware that the PDF colour shades can appear different from the real fabric colours.  
We advise you to request actual fabric samples before ordering.

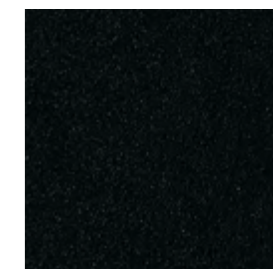
# Wykończenia Finishes Oberflächen

Acos<sup>Pro</sup>, Arca, Ariz, Bit, Com\*,  
Chic, Chic Air, Chic Lounge,  
Chic Stoliki/Tables/Tische,  
Ellie<sup>Pro</sup>, Fan, Normo, Nu, Revo  
Stoliki/Tables/Tische, Stoliki/  
Tables/Tische: SV, SH, SR,  
Seven, Sorriso, Sun, Zoo\*



White  
RAL 9016

Acos<sup>Pro</sup>, Arca, Ariz, Bit, Com\*,  
Chic, Chic Air, Chic Lounge,  
Chic Stoliki/Tables/Tische,  
Ellie<sup>Pro</sup>, Fan, Normo, Nu, Revo  
Stoliki/Tables/Tische, Stoliki/  
Tables/Tische: SV, SH, SR,  
Seven, Sorriso, Sun, Zoo\*,  
MyTurn Sofa, MyTurn Sofa  
Stoliki/Tables/Tische, October  
Stoliki/Tables/Tische, SoftBox,  
Vancouver Lite, Wall In, Xenon,  
Xenon Net



Black  
RAL 9005

Acos<sup>Pro</sup>, Ariz, Chic, Chic Air,  
Chic Lounge, Chic Stoliki/  
Tables/Tische, Com\*, Ellie<sup>Pro</sup>,  
Fan, Normo, Nu\*, Revo Stoliki/  
Tables/Tische, Seven, Sun,  
Stoliki/Tables/Tische: SV, SH,  
SR, Zoo\*

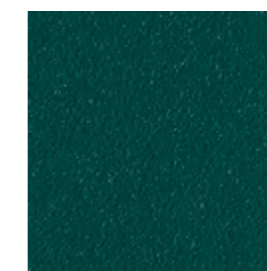


Light Grey  
NCS S 2500-N



Grey  
NCS S 6500-N

Acos<sup>Pro</sup>, Ariz, Chic, Chic Air,  
Chic Lounge, Chic Stoliki/  
Tables/Tische, Com\*, Fan,  
Normo, Nu, Revo Stoliki/  
Tables/Tische, Seven, Sun,  
Stoliki/Tables/Tische: SV,  
SH, SR



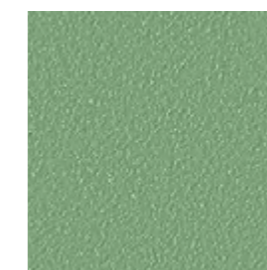
Deep Green  
RAL 6004



Navy Blue  
RAL 5003



Burgundy  
RAL 3005



Salvia/Green  
RAL 6021



Blue  
RAL 5014



Terracotta  
RAL 3012

\*Kolory stelaży w poszczególnych konfiguracjach do potwierdzenia w cenniku / Available colours of the frames to be confirmed with the price list / Die verfügbaren Gestellfarben entnehmen Sie bitte der Preisliste

Kolory wykończeń w druku mogą różnić się od rzeczywistych / Finishing colours in print may be different from actual colours / Die dargestellten Farben können aus drucktechnischen Gründen von den realen Farben abweichen



Acos<sup>Pro</sup>, Arca, Ariz, Bit, Chic,  
Chic Air, Chic Lounge, Chic  
Stoliki/Tables/Tische, Com,  
Ellie<sup>Pro</sup>, Fan, MyTurn, MyTurn  
Sofa, MyTurn Sofa Stoliki/  
Tables/Tische, Normo, Nu,  
October, October Stoliki/  
Tables/Tische, Revo Stoliki/  
Tables/Tische, Seven, Sorriso,  
Sun, Stoliki/Tables/Tische: SV,  
SH, SR, Vancouver Lite, Wall In,  
Xenon, Xenon Net, Zoo



MetallikPro

Chic\*, Chic Air, Chic Lounge,  
Chic Stoliki/Tables/Tische\*,  
Ellie<sup>Pro\*</sup>, Fan\*, Nu\*



Gold

Acos<sup>Pro</sup>, Arca, Ariz, Bit, Chic,  
Chic Air, Chic Lounge, Chic  
Stoliki/Tables/Tische, Com\*,  
Ellie<sup>Pro\*</sup>, Fan, MyTurn, MyTurn  
Sofa, MyTurn Sofa Stoliki/  
Tables/Tische, Nu, October,  
October Stoliki/Tables/Tische,  
SoftBox, Sorriso, Sun, Stoliki/  
Tables/Tische: SV, SH, SR,  
Trillo<sup>Pro</sup>, Vancouver Lite, Wall In,  
Xenon, Xenon Net, Zoo\*



Chrome

Ellie<sup>Pro\*</sup>



Graphite



Metalsilver

\*Kolory stelaży w poszczególnych konfiguracjach do potwierdzenia w cenniku / Available colours of the frames to be confirmed with the price list / Die verfügbaren Gestellfarben entnehmen Sie bitte der Preisliste

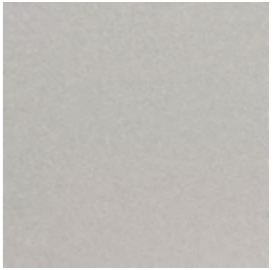
Kolory wykończeń w druku mogą różnić się od rzeczywistych / Finishing colours in print may be different from actual colours / Die dargestellten Farben können aus drucktechnischen Gründen von den realen Farben abweichen

Accis<sup>Pro</sup>, Action, Arca, Ellie<sup>Pro</sup>,  
Fan, LightUp, Motto, MyTurn,  
Nu, Playa, Raya, Stoliki/Tables/  
Tische SF, Trillo<sup>Pro</sup>, Violle, Veris  
Net, Xenon, Xenon Net



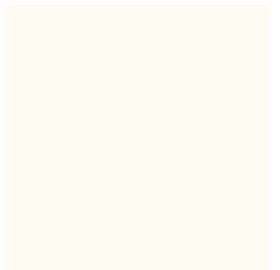
Polished

Arca, Fan, Playa, Raya,  
Veris Net



MetalikPro

Ellie<sup>Pro</sup>, Trillo<sup>Pro</sup>, Nu, Accis<sup>Pro</sup>,  
Viole



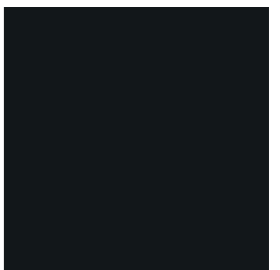
White  
RAL 9016

Ellie<sup>Pro</sup>, Trillo<sup>Pro</sup>, Nu, Accis<sup>Pro</sup>



Graphite

Action, Ellie<sup>Pro</sup>, Trillo<sup>Pro</sup>, Nu

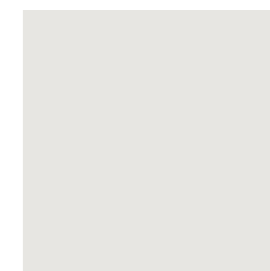


Black  
RAL 9005

\*Kolory stelaży w poszczególnych konfiguracjach do potwierdzenia w cenniku / Available colours of the frames to be confirmed with the price list / Die verfügbaren Gestellfarben entnehmen Sie bitte der Preisliste

Kolory wykończeń w druku mogą różnić się od rzeczywistych / Finisings colours in print may be different from actual colours / Die dargestellten Farben können aus drucktechnischen Gründen von den realen Farben abweichen

Accis<sup>Pro</sup>, Ellie<sup>Pro</sup>, LightUp,  
Mickey, Trillo<sup>Pro</sup>, Violle



Light Grey  
RAL 7047

Mickey



Beige  
RAL 7036

Zoo



Light Grey  
NCS S 2500-N



Grey  
NCS S 6500-N

Mickey, Trillo<sup>Pro</sup>



Grey  
RAL 7043

Accis<sup>Pro</sup>, Ellie<sup>Pro</sup>, Trillo<sup>Pro\*</sup>,  
LightUp, Violle, Zoo



Black  
RAL 9005

\*Kolory stelaży w poszczególnych konfiguracjach do potwierdzenia w cenniku / Available colours of the frames to be confirmed with the price list / Die verfügbaren Gestellfarben entnehmen Sie bitte der Preisliste

Kolory wykończeń w druku mogą różnić się od rzeczywistych / Finishings colours in print may be different from actual colours / Die dargestellten Farben können aus drucktechnischen Gründen von den realen Farben abweichen

Ariz



White  
CODE 20



Ashen  
CODE 517



Black  
CODE 01



Olive Green  
CODE 513



Gray Blue  
CODE 503



Navy  
CODE 516



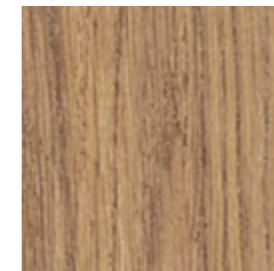
Red  
CODE 3020

\*Kolory stelaży w poszczególnych konfiguracjach do potwierdzenia w cenniku / Available colours of the frames to be confirmed with the price list / Die verfügbaren Gestellfarben entnehmen Sie bitte der Preisliste

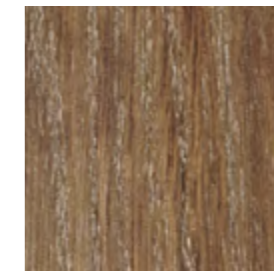
Kolory wykończeń w druku mogą różnić się od rzeczywistych / Finishings colours in print may be different from actual colours / Die dargestellten Farben können aus drucktechnischen Gründen von den realen Farben abweichen

Fan, Stoliki/Tables/Tische SW

Drewno (dąb) / Wood (oak) / Holz (Eiche)



HO6



HO12



HO11

Com, Chic, Chic Air, Ellie<sup>Pro</sup>,  
Fan, Nu, October, Stoliki/  
Tables/Tische SW

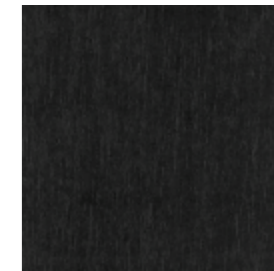
Drewno (buk) / Wood (beech) / Holz (Buche)



H6 (matching NB)



H12



H5

MyTurn Sofa, SoftBox

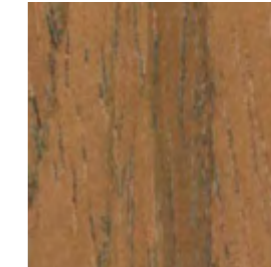
Okleiny naturalne modyfikowane /  
Natural modified veneers / Modifizierte Edelfurniere



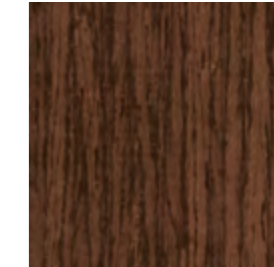
HM10



HM11



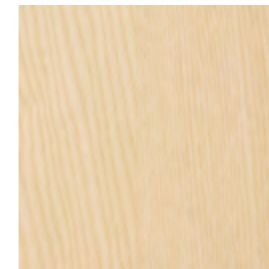
HM12



HM20

Chic Stoliki/Tables/Tische,  
Com, Revo Stoliki/Tables/  
Tische

Okleiny naturalne / Natural veneers / Edelfurnier



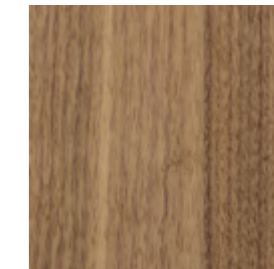
Ash  
NA



Beech  
NB (matching H6)



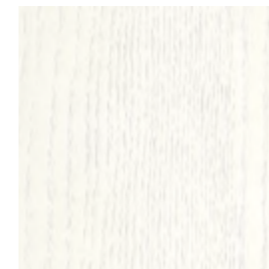
Oak  
NO



Walnut  
NW

Chic Stoliki/Tables/Tische,  
Com, Revo Stoliki/Tables/  
Tische

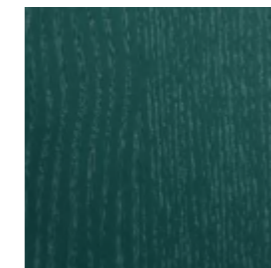
Okleiny naturalne kolorowe /  
Coloured natural veneers / Edelfurniere-Farben



White Ash  
CNA01



Black Ash  
CNA02



Deep Green Ash  
CNA05, RAL 6004

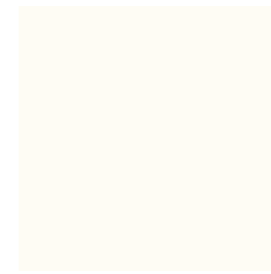


Navy Blue Ash  
CNA06, RAL 5003



Burgundy Ash  
CNA07, RAL 3005

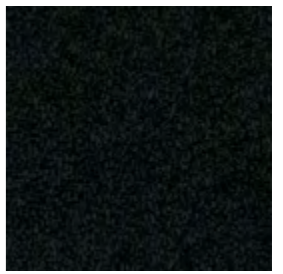
MyTurn Sofa Stoliki/Tables/  
Tische, SoftBox



White  
LW01, RAL 9016

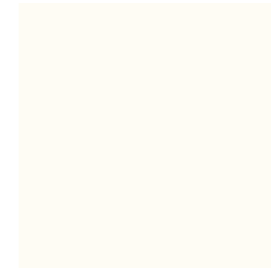


Grey  
LW04, RAL 7037

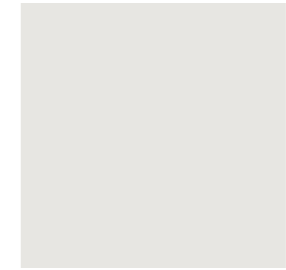


Black  
LW02, RAL 9011

Com, Revo Stoliki/Tables/  
Tische, Stoliki/Tables/Tische  
SH/SR, Wall In



White  
LW01, RAL 9016



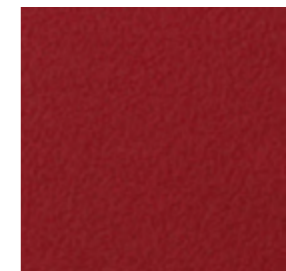
Light Grey  
LW03 NCS 2500-N



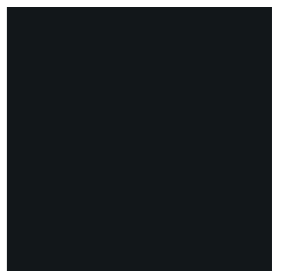
Grey  
LW04, RAL 7037



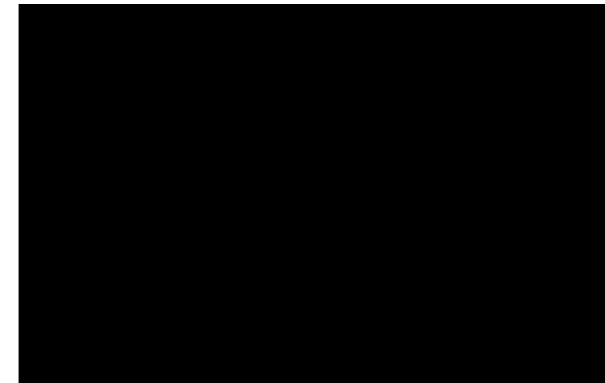
Navy Blue  
LW06, RAL 5003



Light Burgundy  
LW07, RAL 3004



Black  
LW02, RAL 9011



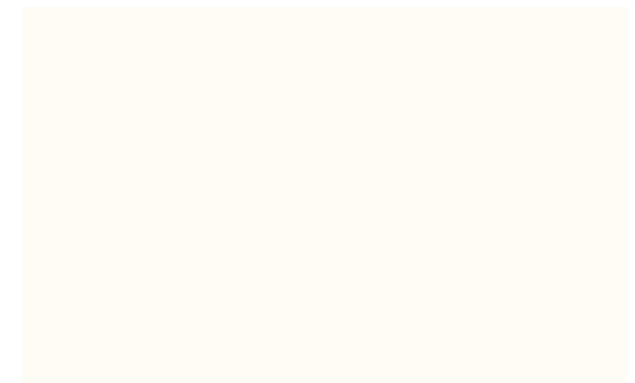
Black  
G2



Graphite  
G4, RAL 7042



Beige  
G3, RAL 7044



White  
G1



# Extended Collection

Producent / Manufacturer / Hersteller	Nazwa Tkaniny / Fabric Name / Stoffe	Grupa Cenowa Ext. / Price Group Ext. / Preisgruppe Ext.
Camira	Blazer	②
	Era	①
	Halcyon	②
	Main Line Flax	②
	Patina	②
	Rivet	①
	Urban	②
	X2	②
	Xtreme CS	①
Crevin	Arc	②
	Galaxy	②
Gabriel	Chili	③
	Comfort+	④
	Fame	②
	Go_Check	③
	Go_Couture	③
	Go_Uni	③
	Just	②
	Mica	②
	Step Melange	①
	Tonal	②
Kvadrat	Atlas	②
	Canvas	③
	Coda	④
	Divina Melange	④
	Divina	④
	Melange Nap	②
	Pro 3	④
	Remix	②
	Revive	①
	Re-wool	②
	Rime	③
	Steelcut	③
	Steelcut Trio	③
	Twill Weave	③
	Skai	Palena
Palma		②
Parotega		②
Sotega		①
Spradling	Chronos	①
	Silvertex	①
	Silvertex B1	②
	Valencia B1	②
Svensson	Semi	①



Legenda / Legend / Legende :

- Możliwość wykonania produktu w podanej tapicerce / Possibility of making the product in the given upholstery / Bezug möglich in diesem Stoff
- Uchwyt zawsze w tkaninie Next / Handle always in fabric Next / Schlaufe zur Höheneinstellung erhältlich nur im Stoff "Next"
- ◇ Możliwość wykonania samego siedziska w danym obiciu / Possibility of making only the seat in the given upholstery / Nur Sitzbezug in diesem Stoff möglich
- Brak możliwości wykonania wyrobu w danym obiciu / Impossibility of making a product in a given upholstery / Bezug nicht möglich in diesem Stoff
- ✕ Brak możliwości wykonania ścianek w danej tapicerce / No possibility of making the walls in the given upholstery / Die Wände nicht möglich in diesem Stoff

Producent / Manufacturer / Hersteller	Spradling				Svensson
Producent / Manufacturer / Hersteller	Chronos	Silvertex	Silvertex B1	Valencia B1	Semi
Grupa Cenowa Ext. / Price Group Ext. / Preisgruppe Ext.	①	①	②	②	①
Accis <sup>Pro</sup>	●	●	●	●	●
Acos <sup>Pro</sup>	●	●	●	●	●
Action	●	●	●	●	●
Ariz	●	●	●	●	●
Bit	●	●	●	●	●
Chic	●	●	●	●	●
Chic Air	–	–	–	–	●
Chic Lounge	–	–	–	–	●
Com	●	●	●	●	●
Ellie <sup>Pro</sup>	–	–	–	–	●
Fan	●	●	●	●	●
LightUp	●	○	●	●	●
Mickey	–	◇	●	●	●
Motto	●	●	●	●	●
MyTurn	–	–	–	–	●
MyTurn Sofa	●	●	●	●	–
Normo	–	–	–	–	●
Nu	●	●	●	●	●
October	●	●	●	●	●
Poduszki / Cushions /Kissen	●	●	●	●	●
Revo	–	–	–	–	●
SoftBox	✕	✕	✕	✕	●
Sorriso	●	●	●	●	●
Trillo <sup>Pro</sup>	●	●	●	●	●
Vancouver Lite	●	●	●	●	●
Vancouver Oto	●	●	●	●	●
Veris Net	●	●	●	●	●
Violle	●	●	●	●	●
Wall In	✕	✕	✕	✕	●
Xenon	●	●	●	●	●
Xenon Net	●	●	●	●	●
Zoo	●	●	●	●	●